



BEIJING YAJABEY INTERNATIONAL CO., LTD.
YAJABEY CORPORATION LIMITED



COMPANY PROFILE

Yajabey, located in Beijing, capital of China, is one leading supplier for valves, fittings, pipes&tubes, stainless steel, Aluminum and Galvanized steel. Yajabey imposes all its emphasis on the international Market. Currently, Yajabey has hold its steady Stand in Europe, Africa, Middle America and South America. Through strong strength of our company, with the jointed efforts of all the staff, we have won a high admiration and been widely trusted by our customers.

We mainly supply stainless steel welded and seamless tubes for ASTM A554, A269 A312, A270 and carbon steel welded and seamless tubes for, A106, Gr B, API 5L, API 5CT, A53, A179, A192 and etc. For valves and fittings, we mainly offer stainless steel and carbon steel material for industrial application as well as sanitary application for stainless steel only, in accordance with ASME, JIS, DIN, 3A, SMS and etc. And, we can also supply Stainless steel coil, sheet according to ASTM A240/480 for mainly 201, 202, 304, 304L, 361L, 310S, 430 materials. Stainless steel angel bar, flat bar, hex bar, Aluminum coil, sheet, Galvanized steel are within our product range.

We, Yajabey, would like to be your good cooperator in competitive price and good service.



**Beijing Yajabey
International Co., Ltd.**

**Yajabey Corporation
Limited**



COMPANY PROFILE

2

PIPE/TUBE

- Stainless Steel Welded Pipe/tube
- Stainless Steel Seamless Pipe/tube
- Stainless Steel Sanitary Pipe/tube
- Alloy Steel Pipe/tube
- Carbon Steel Seamless Pipe/tube
- Carbon Steel Welded Pipe/tube



VALVES/FITTINGS /FLANGES

- Industrial Valves
- Industrial Pipes-fittings & Flanges
- Sanitary Valves
- Sanitary Pipe-fittings

13



STAINLESS STEEL

- Stainless Steel Sheet And Coil
- Stainless Steel Flat/Angle/Round/Hex Bar

36



ALUMINUM

- Aluminum And Its Alloy Strip In Coil
- Aluminum And Its Alloy Plate And Sheet
- Aluminum Foil

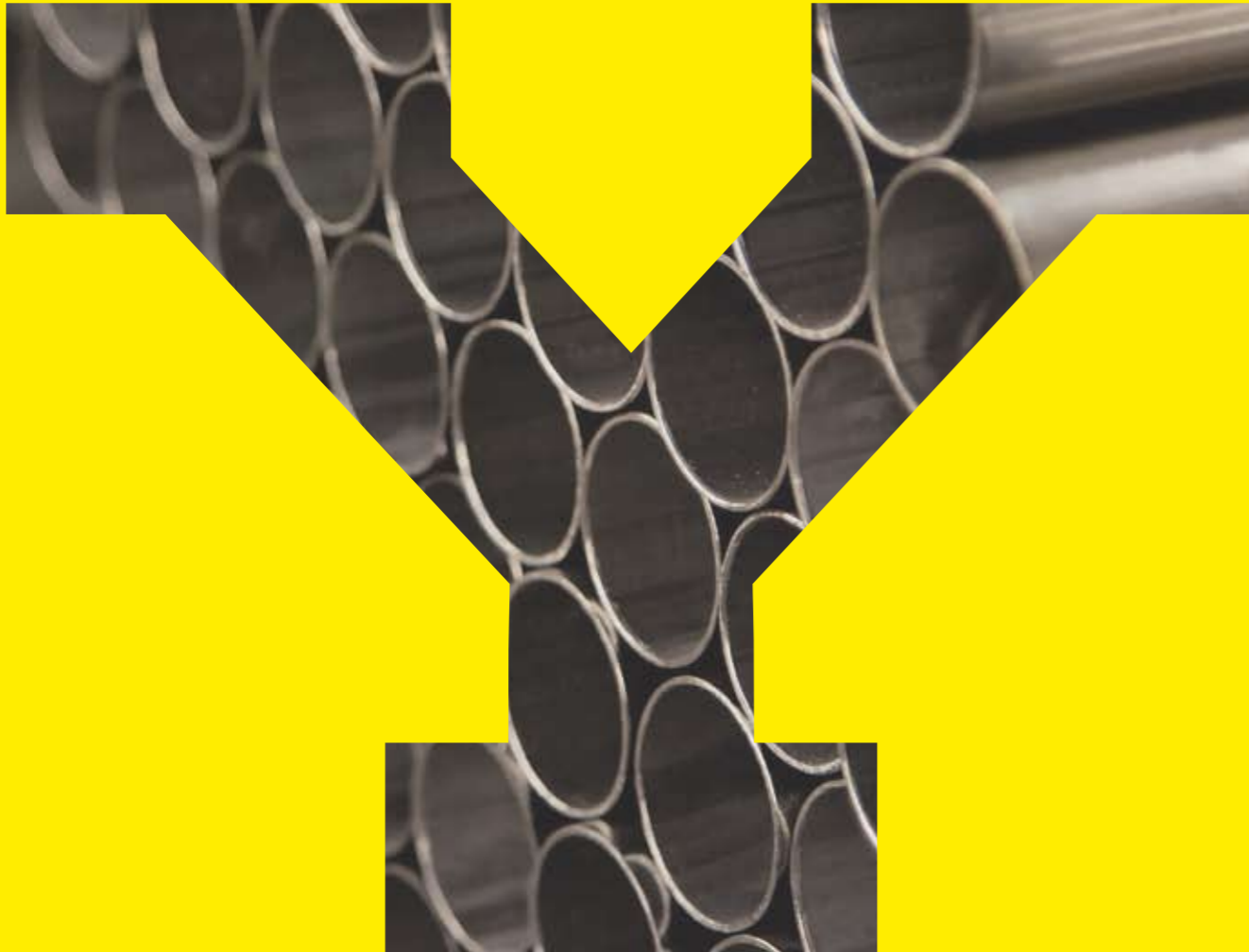
40



GALVANIZED STEEL

- Hot-dip Galvanized Steel Sheet Coil
- Galvalume (55% Al-zn) Coated Steel Coil
- Pre-painted Steel Coil

42



MECHANICAL AND STRUCTURAL STAINLESS STEEL ROUND TUBES, ASTM A554/JIS G3446

Thickness Outside Diameter		0.5	0.6	0.7	0.8	0.9	1.0	1.2	1.5	2.0	2.5	3.0	4.0	5.0	6.0
(Inch)	(mm)														
	6.0	0.5	0.6	0.7	0.8	0.9	1.0								
1/4"	6.35	0.5	0.6	0.7	0.8	0.9	1.0								
9/32"	7.14	0.5	0.6	0.7	0.8	0.9	1.0								
5/16"	8.0	0.5	0.6	0.7	0.8	0.9	1.0	1.2							
3/8"	9.53	0.5	0.6	0.7	0.8	0.9	1.0	1.2	1.5						
	10	0.5	0.6	0.7	0.8	0.9	1.0	1.2	1.5						
7/16"	11.11	0.5	0.6	0.7	0.8	0.9	1.0	1.2	1.5						
	12	0.5	0.6	0.7	0.8	0.9	1.0	1.2	1.5	2.0					
1/2"	12.7	0.5	0.6	0.7	0.8	0.9	1.0	1.2	1.5	2.0					
	14	0.5	0.6	0.7	0.8	0.9	1.0	1.2	1.5	2.0					
5/8"	15.9	0.5	0.6	0.7	0.8	0.9	1.0	1.2	1.5	2.0					
	18	0.5	0.6	0.7	0.8	0.9	1.0	1.2	1.5	2.0					
3/4"	19.1	0.5	0.6	0.7	0.8	0.9	1.0	1.2	1.5	2.0					
	20.5(20)		0.6	0.7	0.8	0.9	1.0	1.2	1.5	2.0	2.5				
7/8"	22.2		0.6	0.7	0.8	0.9	1.0	1.2	1.5	2.0	2.5				
	23.5(23)		0.6	0.7	0.8	0.9	1.0	1.2	1.5	2.0	2.5				
1"	25.4		0.6	0.7	0.8	0.9	1.0	1.2	1.5	2.0	2.5	3.0			
1 1/8"	28.6				0.8	0.9	1.0	1.2	1.5	2.0	2.5	3.0			
	30				0.8	0.9	1.0	1.2	1.5	2.0	2.5	3.0			
1 1/4"	31.8				0.8	0.9	1.0	1.2	1.5	2.0	2.5	3.0			
1 3/8"	35				0.8	0.9	1.0	1.2	1.5	2.0	2.5	3.0			
1 1/2"	38.1				0.8	0.9	1.0	1.2	1.5	2.0	2.5	3.0			
1 5/8"	41.3				0.8	0.9	1.0	1.2	1.5	2.0	2.5	3.0			
1 3/4"	44.5				0.8	0.9	1.0	1.2	1.5	2.0	2.5	3.0			
1 7/8"	47.6				0.8	0.9	1.0	1.2	1.5	2.0	2.5	3.0			
2"	50.8				0.8	0.9	1.0	1.2	1.5	2.0	2.5	3.0			
2 1/8"	54							1.2	1.5	2.0	2.5	3.0			
2 1/4"	57							1.2	1.5	2.0	2.5	3.0			
2 3/8"	60.3							1.2	1.5	2.0	2.5	3.0	4.0		
2 1/2"	63.5							1.2	1.5	2.0	2.5	3.0	4.0		
3"	76.2							1.2	1.5	2.0	2.5	3.0	4.0		
	80								1.5	2.0	2.5	3.0	4.0		
3 1/2"	88.9								1.5	2.0	2.5	3.0	4.0		
4"	101.6								1.5	2.0	2.5	3.0	4.0		
4 1/4"	108								1.5	2.0	2.5	3.0	4.0	5.0	6.0
4 1/2"	114.3								1.5	2.0	2.5	3.0	4.0	5.0	6.0
5"	127								1.5	2.0	2.5	3.0	4.0	5.0	6.0
	133									2.0	2.5	3.0	4.0	5.0	6.0
	141									2.0	2.5	3.0	4.0	5.0	6.0
6"	152.4									2.0	2.5	3.0	4.0	5.0	6.0
	159									2.0	2.5	3.0	4.0	5.0	6.0
6 5/8"	168									2.0	2.5	3.0	4.0	5.0	6.0
8"	203.2									2.0	2.5	3.0	4.0	5.0	6.0
	219.00									2.0	2.5	3.0	4.0	5.0	6.0
	273.00										2.5	3.0	4.0	5.0	6.0

MECHANICAL AND STRUCTURAL STAINLESS STEEL SQUARE TUBES, ASTM A554/JIS G3446

Thickness		0.5	0.6	0.7	0.8	0.9	1.0	1.2	1.5	2.0	2.5	3.0	4.0	5.0	6.0
Outside Diameter															
(inch)	(mm)														
5/16" x 5/16"	8 x 8	0.5	0.6	0.7	0.8	0.9	1.0	1.2							
	10 x 10	0.5	0.6	0.7	0.8	0.9	1.0	1.2							
1/2" x 1/2"	12.7 x 12.7	0.5	0.6	0.7	0.8	0.9	1.0	1.2	1.5						
	5/8" x 5/8"	15.9 x 15.9	0.5	0.6	0.7	0.8	0.9	1.0	1.2	1.5					
3/4" x 3/4"	19 x 19	0.5	0.6	0.7	0.8	0.9	1.0	1.2	1.5	2.0					
	20 x 20		0.6	0.7	0.8	0.9	1.0	1.2	1.5	2.0					
7/8" x 7/8"	22 x 22		0.6	0.7	0.8	0.9	1.0	1.2	1.5	2.0					
	1" x 1"	25 x 25			0.8	0.9	1.0	1.2	1.5	2.0	2.5	3.0			
1 1/8" x 1 1/8"	28.6 x 28.6				0.8	0.9	1.0	1.2	1.5	2.0	2.5	3.0			
	30 x 30				0.8	0.9	1.0	1.2	1.5	2.0	2.5	3.0			
1 1/4" x 1 1/4"	31.8 x 31.8				0.8	0.9	1.0	1.2	1.5	2.0	2.5	3.0			
	1 3/8" x 1 3/8"	35 x 35			0.8	0.9	1.0	1.2	1.5	2.0	2.5	3.0			
1 1/2" x 1 1/2"	38 x 38				0.8	0.9	1.0	1.2	1.5	2.0	2.5	3.0			
	40 x 40				0.8	0.9	1.0	1.2	1.5	2.0	2.5	3.0			
1 3/4" x 1 3/4"	45 x 45						1.0	1.2	1.5	2.0	2.5	3.0			
	2" x 2"	50 x 50						1.2	1.5	2.0	2.5	3.0	4.0		
3" x 3"	60 x 60							1.2	1.5	2.0	2.5	3.0	4.0		
	70 x 70							1.2	1.5	2.0	2.5	3.0	4.0		
	76.2 x 76.2							1.2	1.5	2.0	2.5	3.0	4.0		
	80 x 80								1.5	2.0	2.5	3.0	4.0	5.0	6.0
4" x 4"	90 x 90								1.5	2.0	2.5	3.0	4.0	5.0	6.0
	100 x 100								1.5	2.0	2.5	3.0	4.0	5.0	6.0

MECHANICAL AND STRUCTURAL STAINLESS STEEL RECTANGULAR TUBES, ASTM A554/JIS G3446

Thickness		0.5	0.6	0.7	0.8	0.9	1.0	1.2	1.5	2.0	2.5	3.0	4.0
Outside Diameter													
(inch)	(mm)												
1/2" x 1"	10x20	0.5	0.6	0.7	0.8	0.9	1.0	1.2	1.5				
	12.7x22.2	0.5	0.6	0.7	0.8	0.9	1.0	1.2	1.5				
1" x 1 1/2"	13 x 25	0.5	0.6	0.7	0.8	0.9	1.0	1.2	1.5				
	15 x 30		0.6	0.7	0.8	0.9	1.0	1.2	1.5				
1" x 1 1/2"	15 x 50		0.6	0.7	0.8	0.9	1.0	1.2	1.5				
	20 x 30				0.8	0.9	1.0	1.2	1.5	2.0			
1" x 1 1/2"	20 x 40				0.8	0.9	1.0	1.2	1.5	2.0			
	20 x 50				0.8	0.9	1.0	1.2	1.5	2.0			
1" x 1 1/2"	25 x 38				0.8	0.9	1.0	1.2	1.5	2.0	2.5	3.0	
	25 x 50				0.8	0.9	1.0	1.2	1.5	2.0	2.5	3.0	
2" x 3"	30 x 50				0.8	0.9	1.0	1.2	1.5	2.0	2.5	3.0	
	30 x 60						1.0	1.2	1.5	2.0	2.5	3.0	
2" x 3"	30 x 70						1.0	1.2	1.5	2.0	2.5	3.0	
	40 x 60						1.0	1.2	1.5	2.0	2.5	3.0	
2" x 3"	40 x 80							1.2	1.5	2.0	2.5	3.0	4.0
	45 x 75							1.2	1.5	2.0	2.5	3.0	4.0
2" x 3"	45 x 95							1.2	1.5	2.0	2.5	3.0	4.0
	50 x 75							1.2	1.5	2.0	2.5	3.0	4.0
2" x 4"	40 x 100								1.5	2.0	2.5	3.0	4.0
	50 x 100								1.5	2.0	2.5	3.0	4.0
2" x 4"	60 x 80								1.5	2.0	2.5	3.0	4.0
	60 x 100									2.0	2.5	3.0	4.0
2" x 4"	60 x 120									2.0	2.5	3.0	4.0

**WELDED AUSTENITIC STAINLESS STEEL TUBING FOR GENERAL SERVICE, ASTM A269
WELDED AUSTENITIC STEEL BOILER, SUPERHEATER, HEAT-EXCHANGER AND CONDENSER TUBES, ASTM A249**

Thickness(MM)		0.5	0.6	0.7	0.8	0.9	1.0	1.2	1.5	2.0	2.5	3.0
Outside Diameter												
(inch)	(mm)											
1/4"	6.35	0.5	0.6	0.7	0.8	0.9	1.0					
	3/8"	9.5	0.5	0.6	0.7	0.8	0.9	1.0	1.2	1.5		
1/2"	12.7	0.5	0.6	0.7	0.8	0.9	1.0	1.2	1.5	2.0		
	3/4"	19.1		0.6	0.7	0.8	0.9	1.0	1.2	1.5	2.0	
1"	25.4		0.6	0.7	0.8	0.9	1.0	1.2	1.5	2.0		
	1 1/4"	31.8			0.8	0.9	1.0	1.2	1.5	2.0		
1 1/2"	38.1				0.8	0.9	1.0	1.2	1.5	2.0		
	2"	50.8			0.8	0.9	1.0	1.2	1.5	2.0		
2 1/2"	63.5						1.0	1.2	1.5	2.0	2.5	
	3"	76.2						1.0	1.2	1.5	2.0	2.5
3 1/2"	88.9							1.2	1.5	2.0	2.5	3.0
	4"	101.6						1.2	1.5	2.0	2.5	3.0
4 1/2"	114.3							1.2	1.5	2.0	2.5	3.0
	5"	127							1.5	2.0	2.5	3.0
6"	152.4								1.5	2.0	2.5	3.0

O.D ≤ 5/8" Only ASTM A269

ASTM A269: Annealed & Pickled

O.D ≤ 3/4" Both ASTM A269 And A249

ASTM A249: Bead removed, Annealed & Pickled

INDUSTRIAL STAINLESS STEEL WELDED PIPES, ASTM A312/JIS G3459

Outside Diameter		Outsider Diameter		Thickness(mm)		
NPS	NB	(MM)	SCH5S	SCH10S	SCH40S	
1/8"	6	10.29		1.24	1.73	
1/4"	8	13.27		1.65	2.24	
3/8"	10	17.15		1.65	2.31	
1/2"	15	21.34	1.65	2.11	2.77	
3/4"	20	26.67	1.65	2.11	2.87	
1"	25	33.40	1.65	2.77	3.38	
1 1/4"	32	42.16	1.65	2.77	3.56	
1 1/2"	40	48.26	1.65	2.77	3.68	
2"	50	60.33	1.65	2.77	3.91	
2 1/2"	65	73.03	2.11	3.05	5.16	
3"	80	88.90	2.11	3.05	5.49	
3 1/2"	90	101.60	2.11	3.05	5.74	
4"	100	114.30	2.11	3.05	6.02	
5"	125	141.30	2.77	3.40	6.55	
6"	150	168.28	2.77	3.40	7.11	
8"	200	219.08	2.77	3.76	8.18	
10"	250	273.05	3.40	4.19	9.27	

ASTM A312: Annealed & Pickled

Especially Specialized In SCH 5S/10S



STAINLESS STEEL SEAMLESS PIPE/TUBE

CHEMICAL COMPOSITION

ASTM	Chemical Composition(%)								
	C	Si	Mn	P	S	Cr	Ni	Mo	Others
201(1% nickel)	≤0.150	≤1.00	8.5-10.0	≤0.060	≤0.030	14.00-16.00	≥0.80		N≤0.25
202	≤0.150	≤1.00	7.5-10.0	≤0.060	≤0.030	17.00-19.00	4.00-6.00		N≤0.25
304	≤0.080	≤1.00	≤2.00	≤0.045	≤0.030	18.00-20.00	8.00-10.50		
304L	≤0.030	≤1.00	≤2.00	≤0.045	≤0.030	18.00-20.00	8.00-12.00		
316	≤0.08	≤1.00	≤2.00	≤0.045	≤0.030	16.00-18.00	10.00-14.00	2.00-3.00	
316L	≤0.030	≤1.00	≤2.00	≤0.045	≤0.030	16.00-18.00	10.00-14.00	2.00-3.00	
321	≤0.080	≤1.00	≤2.00	≤0.045	≤0.030	17.00-19.00	9.00-12.00		Ti6≥5*C
409	≤0.080	≤1.00	≤1.00	≤0.040	≤0.030	10.50-11.75	≤0.50		Ti6*C%≤0.70
409L	≤0.030	≤1.00	≤1.00	≤0.040	≤0.030	10.50-11.75	0.50		Ti8*C%≤0.70
430	≤0.120	≤1.00	≤1.00	≤0.040	≤0.030	16.00-18.00			

MECHANICAL PROPERTY

ASTM	Tensile strength(MPa)	Yield strength(MPa)	Elongation(%)	Hardness(HRB)
201(0.8%-1%nickel)	≥655	≥310	≥40	≤100
202	≥620	≥260	≥40	≤100
304	≥515	≥205	≥40	≤92
304L	≥482	≥170	≥40	≤88
316	≥515	≥205	≥40	≤95
316L	≥485	≥170	≥40	≤95
321	≥515	≥205	≥40	≤95
409	≥380	≥205	≥20	≤80
409L	≥350	≥185	≥22	≤80
430	≥450	≥205	≥22	≤80

SURFACE FINISH

Item	Round Tubes		Square & Rectangular Tubes	
	Finish	Description	Finish	Description
Surface finish	Mill Finish	As welded	Mill Finish	As welded
	180#	Buffed after Polishing by 180#	180#	Buffed after polishing by 180#
	400#	Buffed after Polishing by 400#	400#	Buffed after polishing by 400#
	600#	Buffed after Polishing by 600#(mirror)		
	180# Hairline	Hairline finished after polishing 180#	180# Hairline	Hairline finished polishing by 180#
	400# hairline	Hairline finished after polishing 400#	400# Hairline	Hairline finished polishing by 400#

STAINLESS STEEL SOLUTION ANNEALING CONDITION

GB		ASTM		JIS	
Type	Solution annealing	Type	Solution annealing	Type	Solution annealing
0Cr19 Ni9	1010-1150 Water quenching	TP304	1040-1150 Water quenching	SUS304	1010-1150Water quenching
00Cr19 Ni11	1010-1150 Water quenching	TP304L	1040-1150 Water quenching	SUS304L	1010-1150Water quenching
0Cr17 Ni12Mo2	1010-1150 Water quenching	TP316	1040-1150 Water quenching	SUS316	1010-1150Water quenching
00Cr17 Ni14Mo2	1010-1150 Water quenching	TP316L	1040-1150 Water quenching	SUS316L	1010-1150Water quenching

STANDARDS: ASTM A312 / A312 M, ASTM A213/A213M, ASTM A269, ASTM A270.

ASTM A511, ASTM A789, ASTM A790, DIN2462, DIN17458, DIN17456, DIN17440, DIN17226.

MATERIAL: 304(0Cr18Ni9), 304L(00Cr19Ni10), 304/304L, 316(0Cr17Ni12Mo2), 316L(00 Cr17Ni14Mo2), 316/316L, 321(1Cr18Ni9Ti), 317L (00Cr19Ni13Mo3), 347(0Cr18Ni11Nb), 310S(0Cr25Ni20)

SPECIFICATION: OD: 6-762MM
WT: 0.5-50MM

LONGEST LENGTH: 18000MM

ASTM A312/A312M-03 Standard Specification for Seamless Austenitic Stainless Steel Pipes

ASTM A213/A213M-03c Standard Specification for Seamless Ferritic Boiler, Superheated and Heat-Exchanger Tubes

ASTM A269-04 Standard Specification for Seamless Austenitic Stainless Steel Tubing for General Service

ASTM A270-02a Standard Specification for Seamless Austenitic Stainless Steel Sanitary Tubing

ASTM A511-96 Standard Specification for Seamless Stainless Steel Mechanical Tubing

ASTM A789/A789M-05b Standard Specification for Seamless Ferritic/Austenitic Stainless Steel Tubing for General Service



ALLOY STEEL PIPE/TUBE

ALLOY STEEL PIPE/TUBE FOR PETROLEUM CHEMICAL AND ELECTRIC POWER INDUSTRIES

Standard: ASTM A335 (Seamless Ferritic Alloy-Steel Pipe for High-Temperature Service)
ASTM 213(Seamless Ferritic and Austenitic Alloy-Steel Boiler, Superheater and Heat-Exchanger Tubes)

Size: Φ10.3-1219x1.0-101.6

Material: Cr5Mo (STFA 25, STPA 25, STBA25, T5, P5)
15CrMo (STFA 22, STPA 22, STBA22, T12, P12)
1.25Cr0.5Mo (STFA 23, STPA 23, STBA23, T11, P11)
Cr9Mo (STFA 26, STPA 26, STBA26, T9, P9)
12Cr1MoV
12Cr2Mo (10CrMo910, T22, P22)
T91 (P91)

STAINLESS STEEL SANITARY PIPE/TUBE



CARBON STEEL SEAMLESS PIPE/TUBE



STAINLESS STEEL SANITARY WELDED TUBING, ASTM A270

Thickness(MM)		1.2	1.5	1.65	2.0	3.0
Outside Diameter						
(inch)	(mm)					
1"	25.4	1.2	1.5	1.65	2.0	
1 1/4"	31.8	1.2	1.5	1.65	2.0	3.0
1 1/2"	38.1	1.2	1.5	1.65	2.0	3.0
2"	50.8	1.2	1.5	1.65	2.0	3.0
2 1/2"	63.5	1.2	1.5	1.65	2.0	3.0
3"	76.2	1.2	1.5	1.65	2.0	3.0
3 1/2"	88.9	1.2	1.5	1.65	2.0	3.0
4"	101.6	1.2	1.5	1.65	2.0	3.0
5"	127	1.2	1.5	1.65	2.0	3.0
6"	152.4		1.5	1.65	2.0	3.0

STAINLESS STEEL SANITARY TUBES DIN11850

Thickness(MM)	Thickness(MM)	W.T.
Outside Diameter	Outside Diameter	
DIN	O.D	
15	18	1.50
20	22	1.50
25	28	1.50
32	34	1.50
40	40	1.50
50	52	1.50
65	70	2.00
80	85	2.00
100	104	2.00
125	129	2.00
150	154	2.00
200	204	2.00

STAINLESS STEEL SANITARY SEAMLESS PIPES, ASTM A270/3A/IDF

Material: 304,304L, 316,316L, 321

Spec: dia 19.1x1.5mm-159x3mm

Fineness: Inner and outer fineness of mirror $Ra \leq 0.8 \mu m$, inner and outer mechanical polished and electrical polish $Ra \leq 0.2 \mu m$, external surface can be gross polished or sub-gross polished.

ASTM/ASME AND API SPECIFICATION

Product Name	Executive standard	Dimension	Steel Code/Steel Grade
Specification for casing and Tubing	API 5CT	$\phi 26.67 \sim 168 \times 2.17 \sim 12.06$	J55,N80
Specification for line pipe	API 5L	$\phi 10.3 \sim 610 \times 1.7 \sim 40$	A,B
Black and Hot-Dipped Zinc-Coated Steel Pipe, Welded and Seamless	ASTM A53	$\phi 10.3 \sim 426 \times 1.0 \sim 36$	A,B
Seamless Carbon Steel for High Temperature Service	ASTM A106	$\phi 10.3 \sim 426 \times 1.0 \sim 36$	A,B
Seamless Cold-Drawn Low-Carbon Steel Heat Exchanger and Condenser Tubes	ASTM A179	$\phi 10.3 \sim 426 \times 1.0 \sim 36$	Low Carbon Steel
Seamless Carbon Steel Boiler Tubes for High Pressure	ASTM A192	$\phi 10.3 \sim 426 \times 1.0 \sim 36$	Low Carbon Steel
Seamless Cold-Drawn Intermediate Alloy Steel Heat-Exchanger and Condenser Tubes	ASTM A199	$\phi 10.3 \sim 426 \times 1.0 \sim 36$	T5,T22
Seamless Medium-Carbon Steel Boiler and Superheater Tubes	ASTM A210	$\phi 10.3 \sim 426 \times 1.0 \sim 36$	A1,C
Seamless Ferritic and Austenitic Alloy Steel Boiler, Superheater and Heat-Exchanger Tubes	ASTM A213	$\phi 10.3 \sim 426 \times 1.0 \sim 36$	T2, T5, T11, T22
Seamless Carbon and alloy steel for mechanical Tubing	ASTM A519	$\phi 10.3 \sim 426 \times 1.0 \sim 36$	Carbon Steel, Alloy Steel
Seamless Cold-Drawn Carbon Steel Feed water Heater Tubes	ASTM A556	$\phi 10.3 \sim 426 \times 1.0 \sim 36$	A2,B2
Seamless Ferritic Alloy-Steel Pipe for High-Temperature Service	ASTM A335	$\phi 21.3 \sim 762 \times 1.0 \sim 80$	P1, P2, P5, P11, P12 P22, P91

DIN SPECIFICATION

Product Name	Executive standard	Specification	Steel Code /Steel Grade
Seamless Steel Tube for Elevated Temperature	DIN17175	$\phi 16 \sim 426 \times 1.0 \sim 36$	St35.8, St45.8, 17Mn4, 19Mn5, 15Mo3, 13CrMo44
Cold Drawn Seamless Precision Pipe	DIN2391	$\phi 16 \sim 426 \times 1.0 \sim 36$	St35,St45,St52
Seamless Steel pipe for Structural purpose	DIN2393	$\phi 16 \sim 426 \times 1.0 \sim 36$	RSt34-2, RSt37-2, RSt44-2, St52
Seamless Steel Tube	DIN2448/1629/1630	$\phi 16 \sim 426 \times 1.0 \sim 36$	St37/St37.4, St44/St44.4, St52/St52.4

BS SPECIFICATION

Product Name	Executive standard	Dimension	Steel Code/Steel Grade
Seamless Steel Tubes for Machine Structural	BS970	$\phi 10 \sim 426 \times 1.0 \sim 36$	Carbon Steel
Seamless Steel Tubes for Boiler and Heat Exchangers	BS3059	$\phi 10 \sim 426 \times 1.0 \sim 36$	360,410,460,480,490



CARBON STEEL WELDED PIPE/TUBE

1. ERW PIPE

Standard of products: API 5CT, API 5L, ASTM A53, ASTM A252, DIN 1626, ISO559, ISO 3183.1/2, KS 4602, GB/T 3091, GB/T9711.1/2, GB/T 14291, YB/T 4028

Material: Q195, Q215, Q235, GrA, GrB, X42, X52, X56, X60, X65, X70, J55, K55.N80 etc.

Application: low-medium pressure fluid, coal gas transportation, heating steam supply, thermoelectricity, project construction, bridge structure, oil and natural gas pressure steel tube.

OD(mm)	Wall thickness(mm)																				
	2.5	3.0	3.5	4.0	4.5	5.0	5.5	6.0	6.5	7.0	7.5	8.0	8.5	9.0	9.5	10.0	12.7				
21.3	2.5	3.0	3.5																		
26.8	2.5	3.0	3.5																		
33	2.5	3.0	3.5	4.0																	
42	2.5	3.0	3.5	4.0																	
45	2.5	3.0	3.5	4.0																	
48	2.5	3.0	3.5	4.0																	
60	2.5	3.0	3.5	4.0	4.5																
70	2.5	3.0	3.5	4.0	4.5																
76	2.5	3.0	3.5	4.0	4.5																
89		3.0	3.5	4.0	4.5	5.0															
95		3.0	3.5	4.0	4.5	5.0															
102		3.0	3.5	4.0	4.5	5.0	5.5	6.0	6.5												
108		3.0	3.5	4.0	4.5	5.0	5.5	6.0	6.5												
114		3.0	3.5	4.0	4.5	5.0	5.5	6.0	6.5												
121		3.0	3.5	4.0	4.5	5.0	5.5	6.0	6.5												
127		3.0	3.5	4.0	4.5	5.0	5.5	6.0	6.5												
133		3.0	3.5	4.0	4.5	5.0	5.5	6.0	6.5												
140				4.0	4.5	5.0	5.5	6.0	6.5	7.0	7.5										
152				4.0	4.5	5.0	5.5	6.0	6.5	7.0	7.5										
159				4.0	4.5	5.0	5.5	6.0	6.5	7.0	7.5	8.0	8.5	9.0	9.5						
165					4.5	5.0	5.5	6.0	6.5	7.0	7.5	8.0	8.5	9.0	9.5						
168					4.5	5.0	5.5	6.0	6.5	7.0	7.5	8.0	8.5	9.0	9.5						
194					4.5	5.0	5.5	6.0	6.5	7.0	7.5	8.0	8.5	9.0	9.5						
219					4.5	5.0	5.5	6.0	6.5	7.0	7.5	8.0	8.5	9.0	9.5						
245					4.5	5.0	5.5	6.0	6.5	7.0	7.5	8.0	8.5	9.0	9.5	10.0					
273					4.5	5.0	5.5	6.0	6.5	7.0	7.5	8.0	8.5	9.0	9.5	10.0					
325						5.0	5.5	6.0	6.5	7.0	7.5	8.0	8.5	9.0	9.5	10.0					
377							5.5	6.0	6.5	7.0	7.5	8.0	8.5	9.0	9.5	10.0	12.7				
402								5.5	6.0	6.5	7.0	7.5	8.0	8.5	9.0	9.5	10.0	12.7			
426									5.5	6.0	6.5	7.0	7.5	8.0	8.5	9.0	9.5	10.0	12.7		
457										5.5	6.0	6.5	7.0	7.5	8.0	8.5	9.0	9.5	10.0	12.7	
508											5.5	6.0	6.5	7.0	7.5	8.0	8.5	9.0	9.5	10.0	12.7

2.SSAW PIPE

Standard of products: API 5CT, API 5L, ASTM A252, DIN 1626, ISO559, ISO 3183.1/2, KS, 4602, GB/T911.1/2, SY/T5037, SY/T 5040

Material: Q195, Q215, Q235, GrA, GrB, X42, X52, X56, X60, X65, X70, J55, K55.N80 etc.

Application: oil, gas feeding, tap water, polluted water project, heat supply network, reconstruction, piling, bridge and steel structure and etc.

OD(mm)	Wall thickness(mm)																
	4.0	5.0	6.0	7.0	8.0	9.0	10.0	11.0	12.0	13.0	14.0	15.0	16.0	17.0	18.0	20.0	
219.1	4.0	5.0	6.0														
273.1		5.0	6.0	7.0													
323.9			6.0	7.0	8.0												
355.6			6.0	7.0	8.0												
406.4			6.0	7.0	8.0	9.0	10.0										
426			6.0	7.0	8.0	9.0	10.0										
457			6.0	7.0	8.0	9.0	10.0	11.0	12.0	13.0							
508			6.0	7.0	8.0	9.0	10.0	11.0	12.0	13.0							
559				7.0	8.0	9.0	10.0	11.0	12.0	13.0							
610				7.0	8.0	9.0	10.0	11.0	12.0	13.0							
660				7.0	8.0	9.0	10.0	11.0	12.0	13.0							
711				7.0	8.0	9.0	10.0	11.0	12.0	13.0							
762				7.0	8.0	9.0	10.0	11.0	12.0	13.0	14.0						
813				7.0	8.0	9.0	10.0	11.0	12.0	13.0	14.0						
914					8.0	9.0	10.0	11.0	12.0	13.0	14.0	15.0	16.0				
1016					8.0	9.0	10.0	11.0	12.0	13.0	14.0	15.0	16.0				
1067					8.0	9.0	10.0	11.0	12.0	13.0	14.0	15.0	16.0				
1120							10.0	11.0	12.0	13.0	14.0	15.0	16.0				
1220							10.0	11.0	12.0	13.0	14.0	15.0	16.0				
1420							10.0	11.0	12.0	13.0	14.0	15.0	16.0				
1620							10.0	11.0	12.0	13.0	14.0	15.0	16.0				
1820							10.0	11.0	12.0	13.0	14.0	15.0	16.0				
2020							10.0	11.0	12.0	13.0	14.0	15.0	16.0				
2235								12.0	13.0	14.0	15.0	16.0	17.0	18.0	20.0		
2337								12.0	13.0	14.0	15.0	16.0	17.0	18.0	20.0		
2438								12.0	13.0	14.0	15.0	16.0	17.0	18.0	20.0		
2540								12.0	13.0	14.0	15.0	16.0	17.0	18.0	20.0		

Notes:Dimensions other than in the table may be furnished by agreement between the purchaser and the manufacturer.

CARBON STEEL WELDED PIPE/TUBE

4. SQUARE AND RECTANGULAR TUBE

Standard of products: GB/T6728-2002, GB/T6725-2002, JIS3466, EN10219, ASTM A500

Material: Q195, Q215, Q235, GrA, GrB, X42, X52, X56, X60, X65, X70, J55, K55.N80 etc.

Application: large buildings, large equipments, bridge and steel structure and etc.

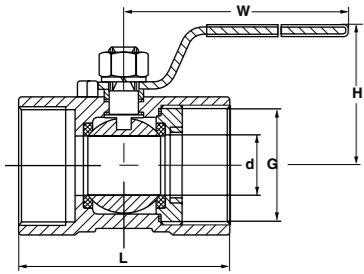
Square Tube		
20*20*	(1.2-2)	mm
30*30*	(1.5-3)	mm
40*40*	(1.5-4)	mm
50*50*	(1.5-4.5)	mm
60*60*	(2-5)	mm
70*70*	(2.5-5)	mm
80*80*	(2.5-6)	mm
90*90*	(3-7)	mm
100*100*	(4-8)	mm
120*120*	(4-8)	mm
130*130*	(4-10)	mm
135*135*	(4-10)	mm
140*140*	(4-10)	mm
150*150*	(4-10)	mm
160*160*	(4-10)	mm
170*170*	(4-10)	mm
180*180*	(4-10)	mm
200*200*	(4-10)	mm
220*220*	(4-10)	mm
250*250*	(4-10)	mm
300*300*	(4-10)	mm
300*300*	(4-10)	mm
400*400*	(4-10)	mm

Rectangular Tube		
30*20*	(1.5-2.5)	mm
40*20*	(1.5-3)	mm
40*25*	(1.5-3)	mm
40*30*	(1.5-3)	mm
50*25*	(1.5-3)	mm
50*30*	(1.5-4)	mm
60*30*	(2-4)	mm
60*40*	(2-4)	mm
70*80*	(2-5)	mm
80*40*	(2-5)	mm
80*60*	(3-5)	mm
90*50*	(3-5)	mm
100*50*	(3-5)	mm
120*80*	(3-6)	mm
120*80*	(3-6)	mm
140*80*	(4-7)	mm
150*100*	(4-8)	mm
160*80*	(4-8)	mm
180*100*	(4-10)	mm
200*120*	(4-10)	mm
200*150*	(4-10)	mm
220*140*	(4-12)	mm
250*150*	(4-12)	mm
250*150*	(4-12)	mm
300*200*	(5-14)	mm
350*250*	(6-14)	mm
400*200*	(6-14)	mm
400*250*	(6-14)	mm
400*300*	(6-14)	mm
450*250*	(6-14)	mm
500*300*	(6-14)	mm

VALVES/FITTINGS/FLANGES



INDUSTRIAL VALVES



Feature 1pc Body
 Size: 1/4"-3"(DN8-80)
 Working Pressure:1000PSI
 Threaded End:
 Optional BSPT/NPT/DIN2999

DIMENSION LIST

NPS	DN	d	L	H	W
1/4	6	4.2	40	22	80
3/8	10	6	45	26	80
1/2	15	8	57	31	88
3/4	20	12	60	34	88
1	25	15	72	38	105
1-1/4	32	19	79	43	105
1-1/2	40	24	85	50	124
2	50	32	101	57	124

1-PC BALL VALVE, REDUCER BORE, 1000PSI, FF



3-PC BALL VALVE, FULL BORE, 1000PSI, FF

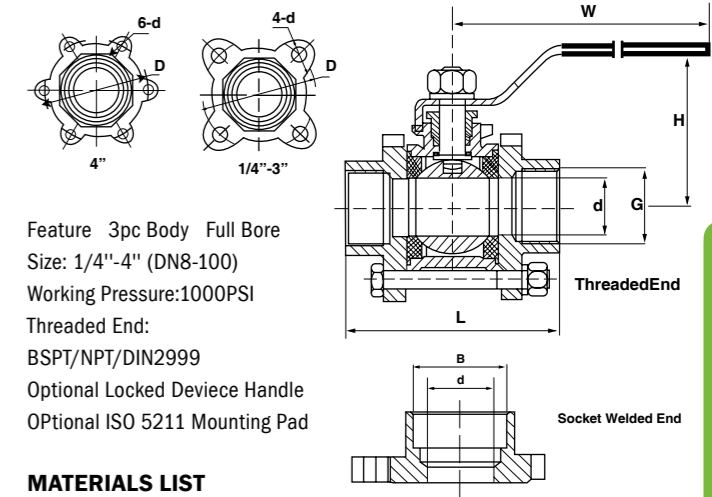


MATERIALS LIST

No	PART NAME	MATERIAL
1	Body	CF8/CF8M
2	Seat	RPTFE
3	Ball	SS304/316
4	Seal Gasket	PTFE
5	Stem Seal	PTFE
6	Stem	SS316
7	Anti-static Device	SS304
8	Stem Packing	PTFE
9	Packing Gland	SS304
10	Spring Washer	SS301
11	Handle	SS304

DIMENSION LIST

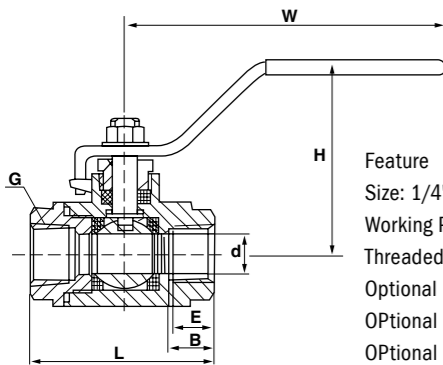
NPS	DN	d	L	H	W	4-d	B
3/8	10	12	65	46	95	7	18
1/2	15	15	75	46	110	8	22
3/4	20	20	85	54	110	8.5	27.5
1	25	25	90	64	140	8.5	34.5
1-1/4	32	32	112	69	140	10	43.5
1-1/2	40	38	120	76	155	10	49.5
2	50	50	145	86	180	11	61.5
2-1/2	65	65	170	120	220	16	77.5
3	80	80	200	150	260	18	90.5
4	100	100	263	170	350	20	115



Feature 3pc Body Full Bore
 Size: 1/4"-4" (DN8-100)
 Working Pressure:1000PSI
 Threaded End:
 BSPT/NPT/DIN2999
 Optional Locked Device Handle
 Optional ISO 5211 Mounting Pad

MATERIALS LIST

No	PART NAME	MATERIAL
1	Body	CF8/CF8M
2	Cap	CF8/CF8M
3	Seat	RPTFE
4	Ball	SS304/316
5	Seal Gasket	PTFE
6	Stem Seal	PTFE
7	Stem	SS304/316
8	Anti-static Device	SS304
9	Nut	SS304
10	Stem Packing	PTFE
11	Packing Gland	SS304
12	Spring Washer	SS301
13	Handle	SS304



Feature 2pc Body Full Bore
 Size: 1/4"-4"(DN8-100)
 Working Pressure:1000PSI
 Threaded End:
 Optional BSPT/NPT/DIN2999
 Optional ISO 5211 Mounting Pad
 Optional Handle With Locked device

DIMENSION LIST

NPS	DN	d	L	H	W
1/4	6	10	55	42	95
3/8	10	10	55	42	95
1/2	15	15	64	51	108
3/4	20	20	75	58	115
1	25	25	85	77	135
1-1/4	32	32	102	83	150
1-1/2	40	38	108	97	175
2	50	50	124	106	190
2-1/2	65	65	163	122	220
3	80	80	185	133	250

2-PC BALL VALVE, FULL BORE, 1000PSI, FF



" T " OR " L " TYPE THREE WAY 1000PSI STANDARD BORE STAINLESS STEEL BALL VALVE



MATERIALS LIST

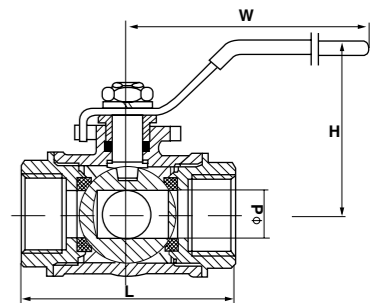
No	PART NAME	MATERIAL
1	Body	CF8/CF8M
2	Cap	CF8/CF8M
3	Seat	RPTFE
4	Ball	SS304/316
5	Seal Gasket	PTFE
6	Stem	SS304/316
7	Nut	SS304
8	Stem Packing	PTFE
9	Packing Gland	SS304
10	Thrust Washer	SS301
11	Handle	SS304

DIMENSION LIST

NPS	DN	d	L	H	W	B	ISO 5211	S
1/4	8	4.2	64	32	85	32	F2	(7)
3/8	10	6	64	32	95	32	F2	(7)
1/2	15	10	68	34	108	34	F3	(9)
3/4	20	15	78	60	115	39	F3	(9)
1	25	20	86	60	135	43	F4	(9)
1-1/4	32	25	111	76	150	55.5	F4	(11)
1-1/2	40	32	126	85	175	63	F5	(11)
2	50	40	143	95	190	71.5	F5	(11)

Note:() for optional demension

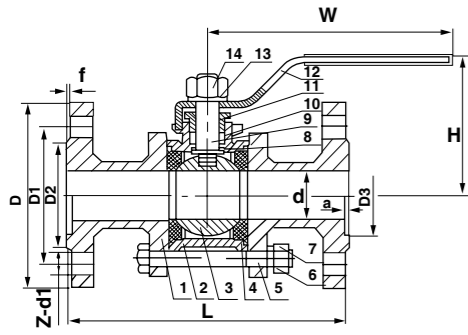
Feature "L" or "T" Type
 Reducer Bore
 Size: 1/4"-2"
 Working Pressure: 1000PSI
 Thread End: BSPT/NPT/DIN2999
 Optional ISO5211 Mounting Pad
 Optional Locked Device Handle



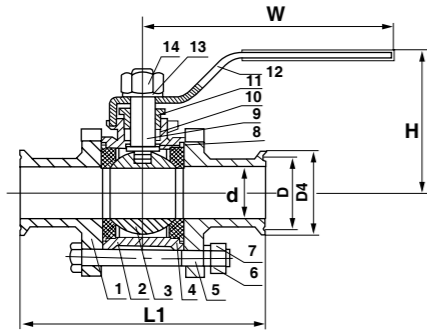
MATERIALS LIST

No	PART NAME	MATERIAL
1	Body	CF8/CF8M
2	Cap	CF8/CF8M
3	Seat	RPTFE
4	Ball	SS304/316
5	Seal Ring	PTFE
6	Stem Seal	PTFE
7	Stem	SS304/SS316
8	Stem Nut	SS304
9	Stem Packing	PTFE
10	Packing Gland	SS304
11	Spring Washer	SS301
12	Handle	SS304
13	Anti-Static Device	SS304

INDUSTRIAL VALVES



Flanged Ball Valve



Quick Connected Ball Valve

MATERIALS LIST

No	PART NAME	MATERIAL
1	Cap	CF8M
2	Body	CF8M
3	Ball	PTFE
4	Seat	SS316
5	Bolt	SS304
6	Washer	SS304
7	Nut	SS304
8	Stem seal	PTFE
9	Stem	SS316
10	Packing	PTFE
11	Packing Gland	SS304
12	Handle	SS304
13	Washer	SS301
14	Stem Nut	SS304

DIMENSION LIST

Size	Flange End							Clamp End							
	DN	d	L	H	D	D1	D2	f	PN4.0		Z	d1	D	D4	L1
15	15	130	77	95	65	45	2	4	a	D3	4	14	43.5	50.5	108
20	20	150	77	105	75	55	2	4	4	14	4	14	43.5	50.5	130
25	25	160	88	115	85	65	2	4	4	14	4	14	43.5	50.5	138
32	32	180	113	135	100	78	2	4	4	18	4	18	43.5	50.5	152
40	40	200	132	145	110	85	3	4	4	18	4	18	56.5	64	166
50	50	230	142	160	125	100	3	4	4	18	4	18	56.5	64	198
65	65	290	173	180	145	120	3	4	4	18	4/8	18	83.5	91	230
80	80	310	182	190	160	135	3	4	4	18	4/8	18	96	106	249
100	100	350	250	215/230	180/190	122/160	3	4.5	18/23	4/8	18/23	-	-	-	-

Note: For PN25 and PN40

3PC FULL BORE STAINLESS STEEL FLANGE END BALL VALVE



Feature
3pc Body
Full Bore
Size: DN15-100
Working Pressure: 1.6/2.5/4.0 Mpa
Flange Standard ANSI B 16.5
Optional Locked Device Handle
Optional 2PC Body

3PC FULL BORE STAINLESS STEEL CLAMP END BALL VALVE



FULL BORE 200PSI STAINLESS STEEL GATE VALVE



DIMENSION LIST

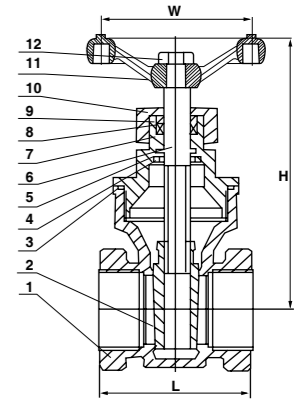
NPS	d	H	L	W
1/2	15	105	50	70
3/4	20	108	60	70
1	25	135	65	80
1-1/4	32	145	75	80
1-1/2	40	155	85	90
2	50	185	95	100

FULL BORE 200PSI STAINLESS STEEL GLOBE VALVE



DIMENSION LIST

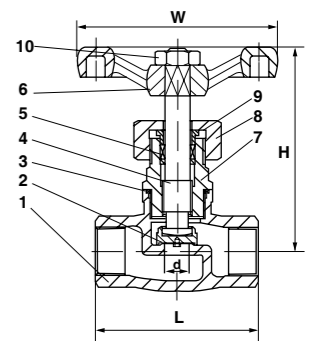
NPS	d	H	L	W
1/2	15	105	50	70
3/4	20	108	60	70
1	25	135	65	80
1-1/4	32	145	75	80
1-1/2	40	155	85	90
2	50	185	95	100



Feature
Full Bore
Size: 1/4"-2"
Working Pressure: 200PSI
Female Threaded End:
BSPT/NPT/DIN2999

MATERIALS LIST

No	PART NAME	MATERIAL
1	Body	CF8/CF8M
2	Disc	CF8/CF8M
3	Seal Ring	SS316
4	Snap Spring	SS316
5	Washer	PTFE
6	Stem	SS316/304
7	Bonnet	CF8/CF8M
8	Packing	PTFE
9	Gasket	PTFE
10	Gland nut	SS316
11	Handwheel	HT(C.R.)
12	Nut	SS316

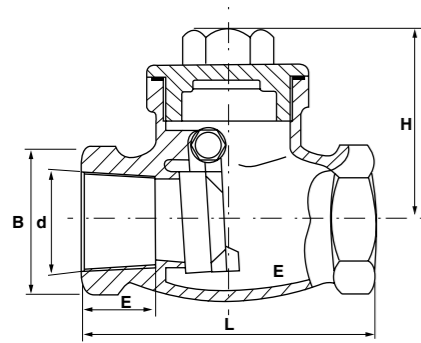


Feature
Full Bore
Size: 1/4"-2"
Working Pressure: 200PSI
Female Threaded End:
BSPT/NPT/DIN2999

MATERIALS LIST

No	PART NAME	MATERIAL
1	Body	CF8M/CF8
2	Disc	CF8M/CF8
3	Seal Ring	SS316/SS304
4	Stem	SS316/SS304
5	Packing	PTFE
6	Handwheel	HT(C.R.)
7	Bonnet	CF8M/CF8
8	Gland Nut	SS316
9	Packing Gasket	SS316
10	Nut	SS316

INDUSTRIAL VALVES



SWING CHECK VALVE 200PSI/600PSI



Feature Full Bore Size: 1/4"-2"
 Working Pressure: 200PSI/600PSI
 Female Threaded End: BSPT/NPT/DIN2999

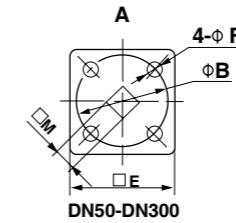
DIMENSION LIST

NPS	d	H	L
1/4	8	36	58
3/8	10	36	58
1/2	15	40	66
3/4	20	54	80
1	25	59	90
1-1/4	32	62.5	105
1-1/2	40	73	120
2	50	85	140

MATERIALS LIST

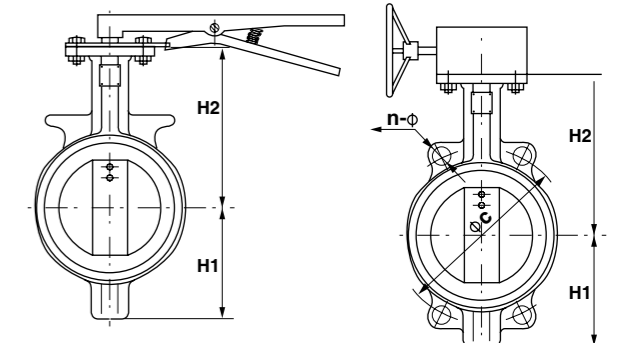
No	PART NAME	MATERIAL
1	Body	CF8M
2	Disc	CF8M
3	Seal Ring	PTFE
4	Pin	SS304
5	Cap	CF8

WAFER TYPE BUTTERFLY VALVE



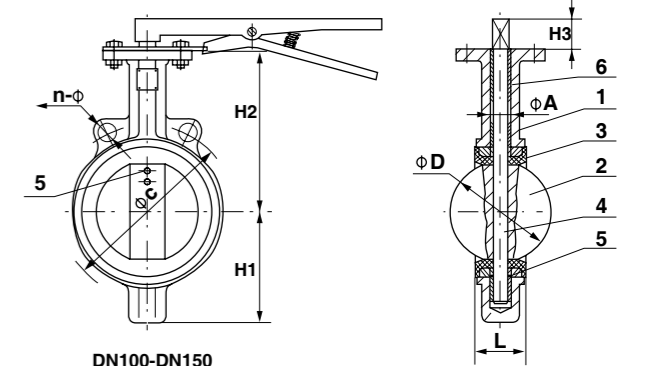
MATERIALS LIST

No	DESCRIPTION	MATERIAL
1	Body	SS316/CI
2	Disc	SS316
3	Seat	TEFLON/EPDM
4	Stem	SS316
5	Taper pin	SS316
6	Bushing	TEFLON/PTFE
7	"O"ring	EPDM/NBR



DN50-DN80

DN200-DN300



DN100-DN150

VERTICAL CHECK VALVE



Feature
 Working pressure: 200PSI/600PSI
 Temperature range: -20~232°C
 Suitable medium: water, oil, air and some corrosive liquid
 Thread kinds: NPT, BSPT, BSP, DIN259/2999

DIMENSION LIST

DN	Rc	L	h	D
15	1/2	100	15	50
20	3/4	120	16	60
25	1	130	18	68
32	1-1/4	150	20	82
40	1-1/2	170	22	95
50	2	190	25	110

MATERIALS LIST

PART NAME	MATERIAL
Body	SS304
End Cap	SS304
Disc	SS316
Spring	SS301
Seat Ring	Asbestos

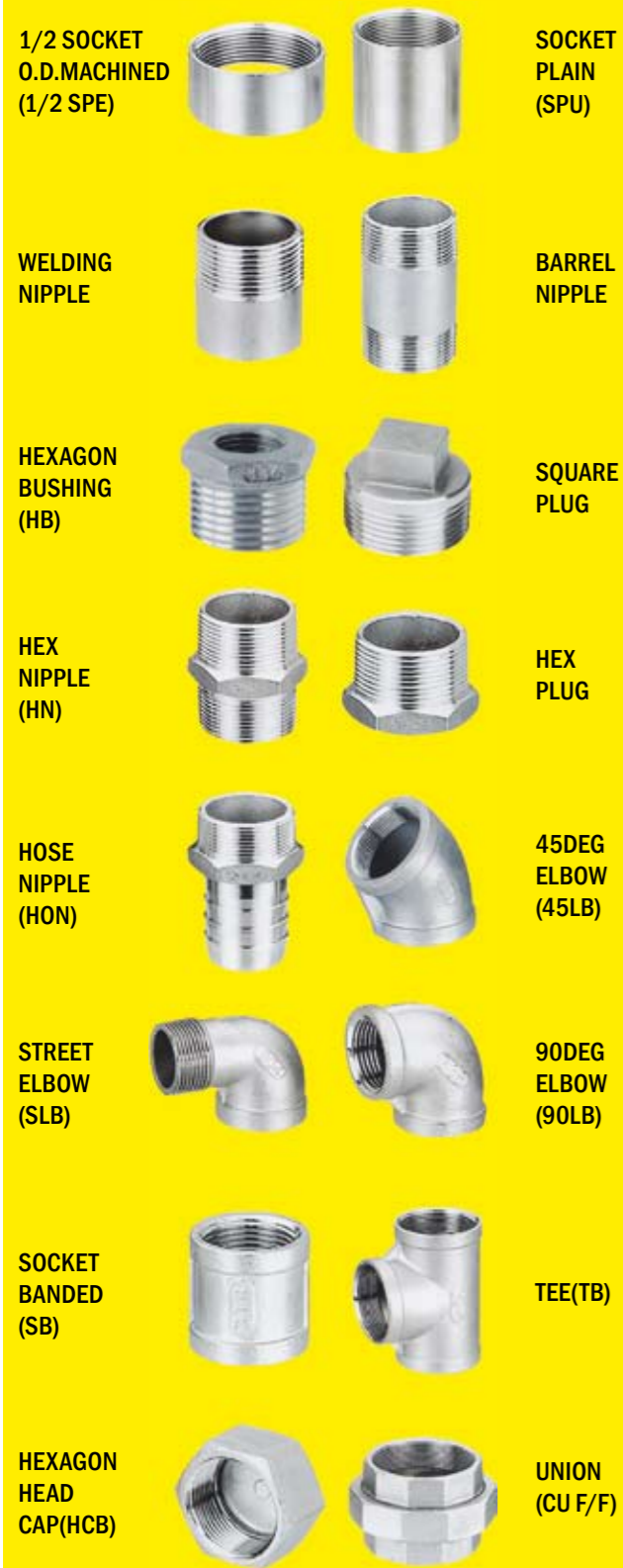
DIMENSION LIST

DN	H1	H2	H3	L	ΦA	□E&ΦF	ΦB	ΦP	□M	ΦD
DN50	70	130	32	45	12.7	70	50/70	7/9	9	52.9
DN65	76	143	32	48	12.7	70	50/70	7/9	9	64.6
DN80	85	155	32	49	12.7	70	50/70	7/9	9	79.04
DN100	106	170	32	55	15.8	70	70	9	11	104.4
DN125	124	190	32	58	19.05	70	70	9	14	129.5
DN150	136	210	32	59	19.05	70	70	9	14	155.8
DN200	168	243	36	64	22.2	102	102	11	17	202.7
DN250	205	282	36	70	28.6	115	102/125	11/13	22	250.7
DN300	237	310	36	80	31.8	115	102/125	11/13	22	301.9

DN	DIN PN10		DIN PN16		ANSI B16.1		JIS 10K	
	ΦC	□-Φ	ΦC	□-Φ	ΦC	□-Φ	ΦC	□-Φ
DN50	125	4-Φ18	125	4-Φ18	120.65	19	120	4-Φ19
DN65	145	4-Φ18	145	4-Φ18	139.7	19	140	4-Φ19
DN80	160	4-Φ18	160	8-Φ18	152.4	19	150	8-Φ19
DN100	180	8-Φ18	180	8-Φ18	190.5	19	175	8-Φ19
DN125	210	8-Φ18	210	8-Φ18	215.9	22.4	210	8-Φ23
DN150	240	8-Φ23	240	8-Φ23	241.3	22.4	240	8-Φ23
DN200	295	8-Φ23	295	12-Φ23	298.45	22.4	290	12-Φ23
DN250	350	12-Φ23	355	12-Φ27	361.95	25.4	355	12-Φ25
DN300	400	12-Φ23	410	12-Φ27	431.8	25.4	400	16-Φ25

INDUSTRIAL PIPES-FITTINGS & FLANGES

150LBS SS304/SS316 & MALLEABLE IRON THREADED FITTINGS



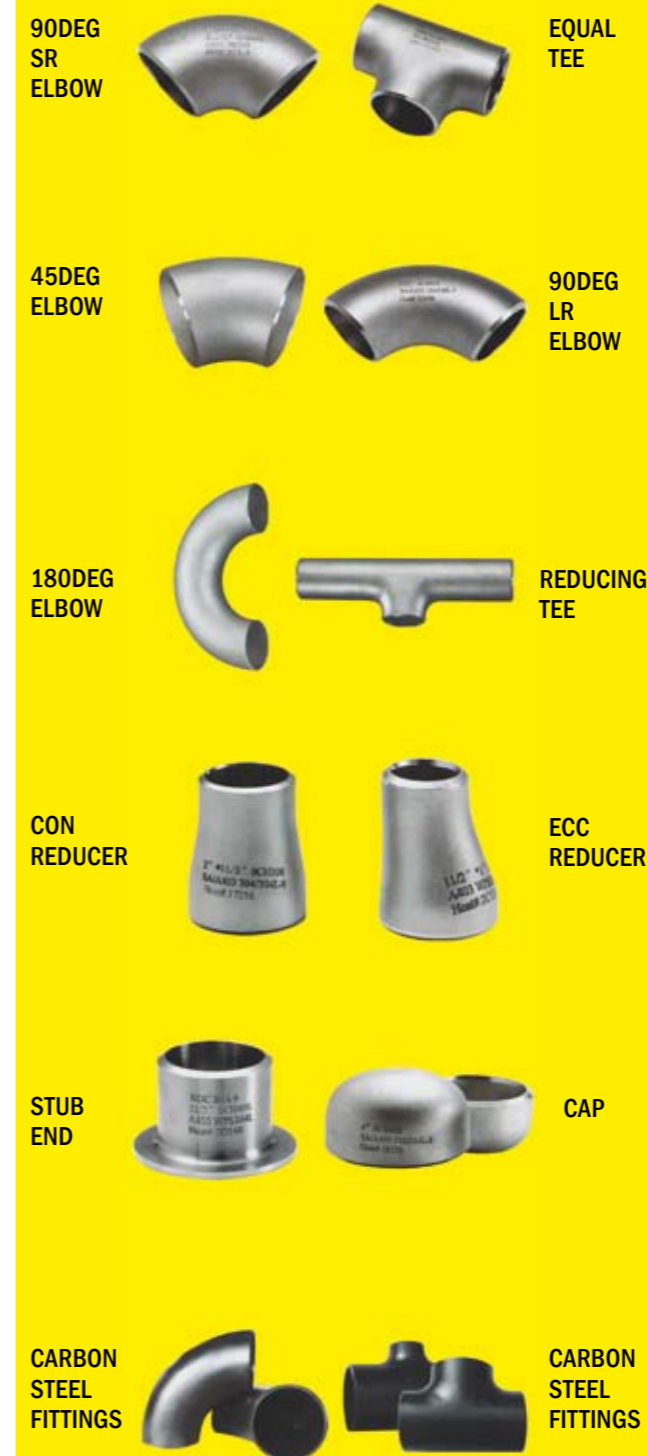
STANDARD ANSI B16.3/ISO4144

HIGH PRESSURE FITTINGS



STANDARD ANSI B16.11
MATERIAL:ASTM A105; SS304;
SS316 & ALLOY STEEL

BUTT-WELDED FITTINGS



STANDARD: ANSI B16.9, DIN
MATERIAL :ASTM A234WPB; SS304; SS316 & ALLOY STEEL

INDUSTRIAL FLANGES

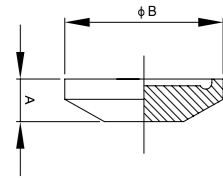


STANDARD: ANSI B16.5; ANSI B16.47; DIN; BS & JIS
MATERIAL :ASTM A105; SS304;
SS316 & ALOY STEEL

SANITARY CLAMP SERIES

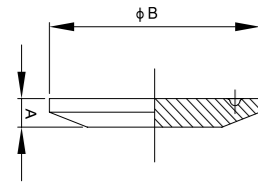
END CAP

3A-16AMP



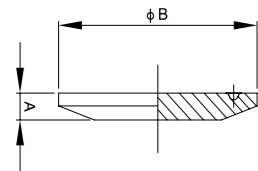
Size	A	B
1/2"	6.3	25.4
3/4"	6.3	25.4

3A-16AMP



Size	A	B
1"	6.3	50.5
1 1/2"	6.3	50.5
2"	6.3	64.0
2 1/2"	6.3	77.5
3"	6.3	91.0
4"	7.9	119.0
6"	11.1	167.0
8"	11.1	217.7
10"	11.1	268.5

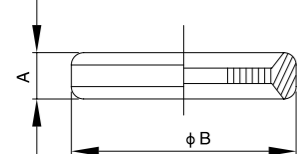
DIN



Size	A	B
DN15	6.3	34.0
DN20	6.3	34.0
DN25	6.3	50.5
DN32	6.3	50.5
DN40	6.3	50.5
DN50	6.3	64.0
DN65	6.3	91.0
DN80	6.3	106.0
DN100	6.3	119.0
DN125	11.1	145.0
DN150	11.1	167.0

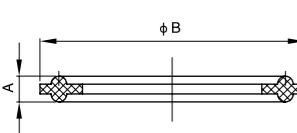
GASKET FOR FERRULE

3A



Size	A	B
1/2"	4.5	21.8
3/4"	4.5	21.8

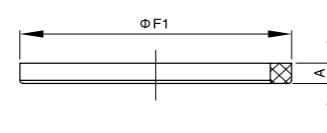
DIN



Size	A	B
DN15	5.0	34.0
DN20	5.0	34.0
DN25	5.0	50.5
DN32	5.5	50.5
DN40	5.5	50.5
DN50	5.5	64.0
DN65	5.5	91.0
DN80	5.5	106.0
DN100	5.5	119.0
DN125	5.5	145.0
DN150	5.5	167.0

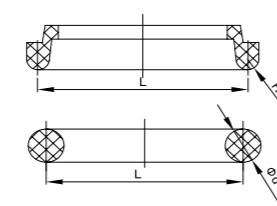
GASKET FOR UNION

SMS



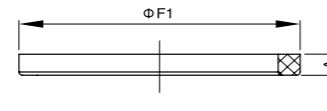
Size	A	F1
25	5.5	33.0
32	5.5	40.0
38	5.5	48.0
51	5.5	61.0
63	5.5	73.0
76	6.0	86.0
89	6.0	99.0
102	6.0	114.0

RJT



Size	L	R	d
1"	33.3	3.2	6.6
1 1/2"	46.0	3.2	6.6
2"	58.7	3.2	6.6
2 1/2"	71.4	3.2	6.6
3"	84.1	3.2	6.6
4"	109.5	3.2	6.6

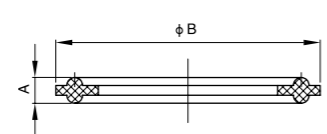
DIN



Size	A	F1
DN15	5.0	26.0
DN20	5.0	33.0
DN25	5.0	40.0
DN32	5.0	46.0
DN40	5.0	52.0
DN50	5.0	64.0
DN65	5.0	81.0
DN80	6.0	95.0
DN100	6.0	114.0
DN125	7.0	142.0
DN150	7.0	167.0

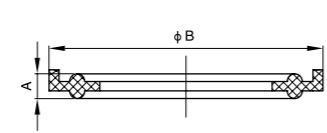
GASKET FOR FERRULE

3A



Size	A	B
1"	5.0	50.5
1 1/2"	5.0	50.5
2"	5.5	64.0
2 1/2"	5.5	77.5
3"	5.5	91.0
4"	5.5	119.0
6"	5.5	167.0
8"	5.5	217.7
10"	5.5	268.5

SMS

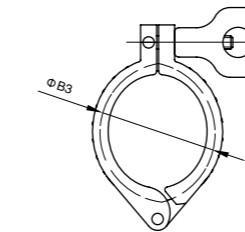


Size	A	B
1"	5.0	52.7
1 1/2"	5.0	52.7
2"	5.5	66.2
2 1/2"	5.5	79.7
3"	5.5	93.2
4"	5.5	121.2



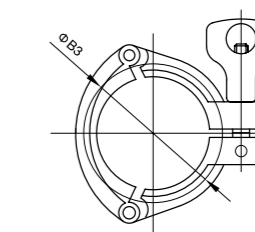
CLAMP

Clamp-Single pin heavy duty(13MHH)



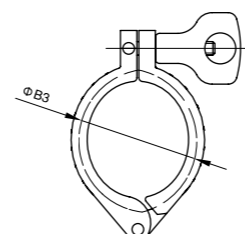
Size	B3
1/2"	28.0
3/4"	28.0
1"	53.9
1 1/2"	53.9
2"	67.4
2 1/2"	80.9
3"	94.4
4"	122.4
6"	170.4
8"	221.2
10"	270.0

Clamp - Three section(13MHHM-3P)



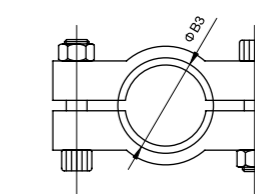
Size	B3
1"	53.9
1 1/2"	53.9
2"	67.4
2 1/2"	80.9
3"	94.4
4"	122.4

DIN



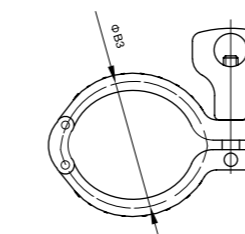
Size	B3
DN10	37
DN15	37
DN20	37
DN25	53
DN32	53
DN40	53
DN50	67
DN65	94
DN80	109
DN100	122

Clamp - Bolted high pressure (13MHP)



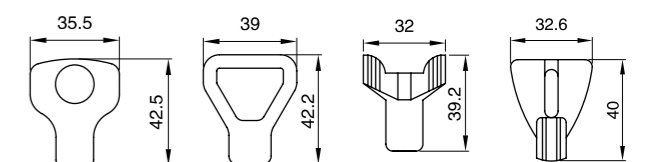
Size	B3
1"	52.0
1 1/2"	52.0
2"	65.5
2 1/2"	79.0
3"	92.5
4"	120.5

Clamp- Double-pin heavy duty (13MHHM-DP)



Size	B3
1"	53.6
1 1/2"	53.6
2"	67.0
2 1/2"	80.6
3"	94.0
4"	122.0
6"	170.0
8"	220.8

Nut



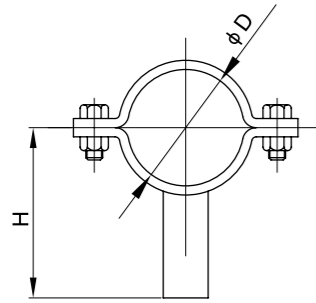
SANITARY CLAMP SERIES

HANGER

ROTARY CLEANING BALL

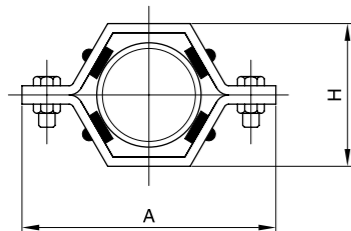
SANITARY CLEANING BALL SERIES

Round hanger with bar



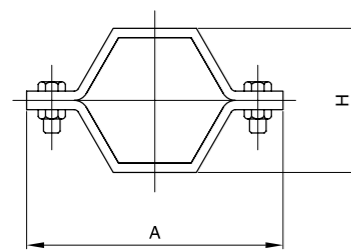
Size	H	D
1"	61.0	25.4
1 1/4"	64.0	31.8
1 1/2"	67.0	38.1
2"	74.0	50.8
2 1/2"	80.0	63.5
3"	86.0	76.2
3 1/2"	93.0	89.0
4"	100.0	101.6
4 1/4"	102.0	108.0
4 1/2"	105.0	114.0
5"	115.0	133.0
6"	128.0	159.0

Hex hanger with buna insert



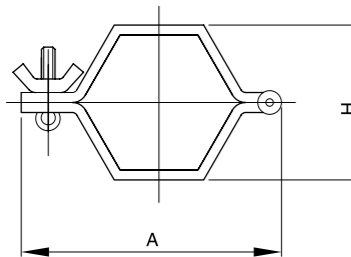
Size	H	D
1"	61.0	25.4
1 1/4"	64.0	31.8
1 1/2"	67.0	38.1
2"	74.0	50.8
2 1/2"	80.0	63.5
3"	86.0	76.2
3 1/2"	93.0	89.0
4"	100.0	101.6
4 1/4"	102.0	108.0
4 1/2"	105.0	114.0
5"	115.0	133.0
6"	128.0	159.0

Hex hanger



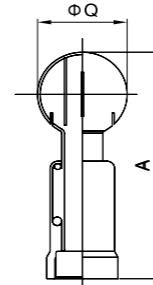
Size	H	D
1"	61.0	25.4
1 1/4"	64.0	31.8
1 1/2"	67.0	38.1
2"	74.0	50.8
2 1/2"	80.0	63.5
3"	86.0	76.2
3 1/2"	93.0	89.0
4"	100.0	101.6
4 1/4"	102.0	108.0
4 1/2"	105.0	114.0
5"	115.0	133.0
6"	128.0	159.0

Hex hanger



Size	H	D
1"	61.0	25.4
1 1/4"	64.0	31.8
1 1/2"	67.0	38.1
2"	74.0	50.8
2 1/2"	80.0	63.5
3"	86.0	76.2
3 1/2"	93.0	89.0
4"	100.0	101.6
4 1/4"	102.0	108.0
4 1/2"	105.0	114.0
5"	115.0	133.0
6"	128.0	159.0

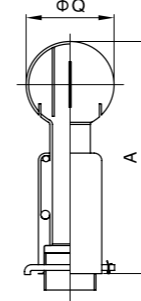
Threaded



Size	A	Q
1"	140.0	53.0
1 1/4"	160.0	63.0
1 1/2"	170.0	63.0
2"	192.0	76.0
2 1/2"	220.0	91.0

Size	"Pressure (bar)"	"Cleaning radius(m)"	"Fluxation m3/h"
1"~1.5"	2	1.25	12
2"	2	1.5	38
2.5"	2	2.0	38

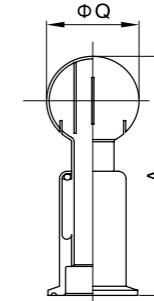
Bolted



Size	A	Q
1"	135.0	53.0
1 1/4"	137.0	53.0
1 1/2"	137.0	53.0
2"	168.0	63.0
2 1/2"	190.0	76.0

Size	"Pressure (bar)"	"Cleaning radius(m)"	"Fluxation m3/h"
1"~1.5"	2	1.25	12
2"	2	1.5	38
2.5"	2	2.0	38

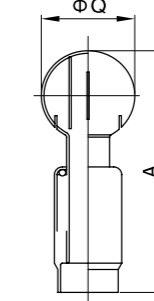
Clamped



Size	A	Q
1"	138.0	53.0
1 1/4"	138.0	53.0
1 1/2"	138.0	53.0
2"	168.0	63.0
2 1/2"	190.0	76.0

Size	"Pressure (bar)"	"Cleaning radius(m)"	"Fluxation m3/h"
1"~1.5"	2	1.25	12
2"	2	1.5	38
2.5"	2	2.0	38

Welded

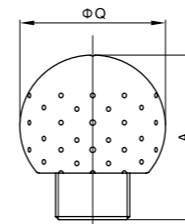


Size	A	Q
1"	143.0	53.0
1 1/4"	145.0	53.0
1 1/2"	145.0	53.0
2"	180.0	63.0
2 1/2"	200.0	76.0

Size	"Pressure (bar)"	"Cleaning radius(m)"	"Fluxation m3/h"
1"~1.5"	2	1.25	12
2"	2	1.5	38
2.5"	2	2.0	38

FIXED CLEANING BALL

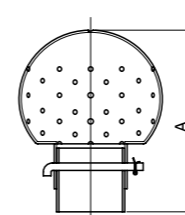
Threaded



Size	A	Q
1"	72.0	63.0
1 1/4"	85.0	76.0
1 1/2"	87.0	76.0
2"	102.0	91.0

Size	"Pressure (bar)"	"Cleaning radius(m)"	"Fluxation m3/h"
1"	2.5	1.0~1.25	17/10
1.25"~1.5"	2.5	1.25~1.75	23/17
2"	3.5	2.0~3.0	55/38
2.5"	3.5	3.0~3.5	58/41

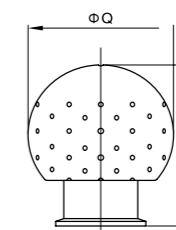
Bolted



Size	A	Q
1"	95.0	63.0
1 1/2"	110.0	76.0
2"	125.0	91.0
2 1/2"	135.0	100.0

Size	"Pressure (bar)"	"Cleaning radius(m)"	"Fluxation m3/h"
1"	2.5	1.0~1.25	17/10
1.25"~1.5"	2.5	1.25~1.75	23/17
2"	3.5	2.0~3.0	55/38
2.5"	3.5	3.0~3.5	58/41

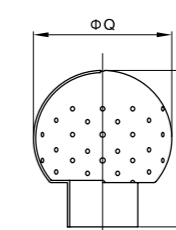
Clamped



Size	A	Q
1"	80.0	63.0
1 1/4"	93.0	76.0
1 1/2"	93.0	76.0
2"	108.0	91.0
2 1/2"	115.0	100.0

Size	"Pressure (bar)"	"Cleaning radius(m)"	"Fluxation m3/h"
1"	2.5	1.0~1.25	17/10
1.25"~1.5"	2.5	1.25~1.75	23/17
2"	3.5	2.0~3.0	55/38
2.5"	3.5	3.0~3.5	58/41

Welded



Size	A	Q
1"	72.0	53.0
1 1/2"	85.0	63.0
2"	87.0	91.0
2 1/2"	102.0	100.0

Size	"Pressure (bar)"	"Cleaning radius(m)"	"Fluxation m3/h"
1"	2.5	1.0~1.25	17/10
1.25"~1.5"	2.5	1.25~1.75	23/17
2"	3.5	2.0~3.0	55/38
2.5"	3.5	3.0~3.5	58/41



STAINLESS STEEL SHEET AND COIL

TECHNICAL DATA



PRODUCT RANGE
STAINLESS STEEL HR/CR SHEET/COIL
ASTM A240/A480, JIS G4305, DIN 17441(EN 10204 3.1)

Product	Finish	Grade	Thickness(mm)	Standard Width(mm)
CR Coil/sheet	2B	201/202	0.4-3.0	1219/1250
CR Coil/sheet	2B	304/304L/316L	0.4-3.0	1000/1219/1250/1500/1524
CR Coil/sheet	2B	430	0.3-3.0	1000/1219/1250
CR Coil/sheet	BA	201/202	0.4-2.0	1219/1250
CR Coil/sheet	BA	304/304L/316L	0.4-2.0	1000/1219/1250
CR Coil/sheet	BA	430	0.3-2.0	1000/1219/1250
CR Coil/sheet	No.4	201/202	0.4-3.0	1219/1250
CR Coil/sheet	No.4	304/304L/316L	0.4-3.0	1000/1219/1250/1500/1524
CR Coil/sheet	No.4	430	0.3-3.0	1000/1219/1250
CR Coil/sheet	HL	304/304L/316L	0.4-3.0	1000/1219/1250/1500/1524
CR Coil/sheet	No.5	304/304L/316L	0.4-3.0	1000/1219/1250/1500/1524
CR Coil/sheet	No.8	304/304L/316L	0.7-2.0	1219/1250
HR Coil/sheet/plate	No.1	201/202	3.0-6.0	1219/1250
HR Coil/sheet/plate	No.1	304/304L/316L	3.0-80.0	1000/1219/1250/1500/1524

Product features:

1. Both-sides polished available
2. Coating: laser foil, PVC, PE, Paper

3. Package weight(standard):

CR coil: 4-7 mts per coil CR sheet: 2mts per bundle
 HR coil: 10mts per coil HR sheet: 4mts per bundle
 (customization for coil/sheet weight is available)



TECHNICAL DATA

SURFACE FINISHING AND APPLICATIONS

Surface finishes	Definition	Applications
No.1	The surface is finished by heat treatment and pickling or process corresponding thereto after hot rolling	Chemical tanks and piping, petroleum refining equipment
2 B	Those finished after cold rolling, by heat treatment, pickling or other equivalent treatment and lastly by cold rolling to give an appropriate luster	Medical equipment, food processing, architectural applications, cooking utensils, kitchen sinks
BA	Those processed with bright heat treatment after cold rolling	Cooking utensils, electric appliance,
No.4	Those finished by polishing with No.150 to No.180 abrasives specified in JIS R6001	Architectural applications, medical equipment, automobile, food processing, kitchen counters
HL	Those finished by polishing so as to give continuous polishing streaks by using abrasives of suitable grain size	
No.8	A mirror-like reflective surface, which is obtained by polishing with successively finer abrasives and buffing extensively with all grit lines are removed	Building entrances, building column casing, elevator's walls & doors, counter, sculptures

TECHNICAL DATA

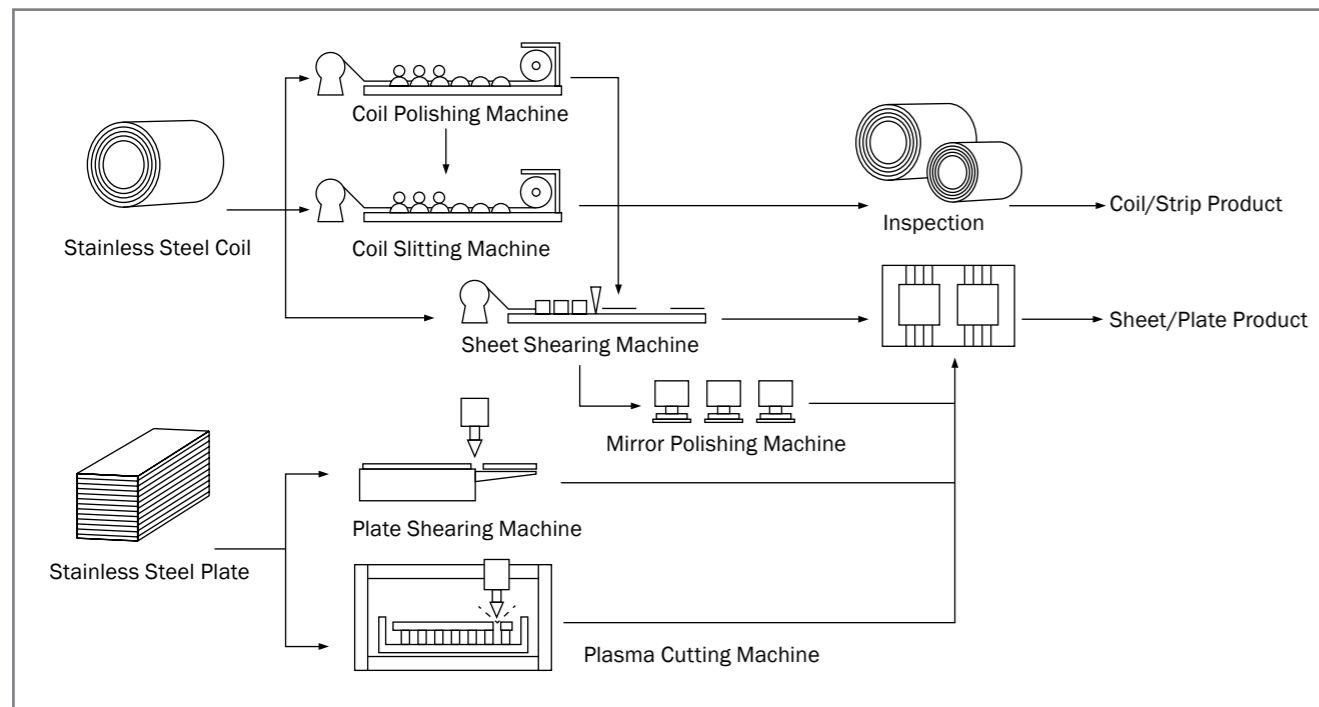
TABLE OF THE CHEMICAL COMPOSITION OF STAINLESS STEEL PLATES & SHEETS

Grade	Chemical Composition (%)									
	C	Si	Mn	P	S	Ni	Cr	Mo	N	
ASTM A240	304	≤0.08	≤0.75	≤2.00	≤0.045	≤0.03	8-10.5	18-20	-	≤0.1
	304L	≤0.03	≤0.75	≤2.00	≤0.045	≤0.03	8-12	18-20	-	≤0.1
	316	≤0.08	≤0.75	≤2.00	≤0.045	≤0.03	10-14	16-18	2-3	≤0.1
	316L	≤0.03	≤0.75	≤2.00	≤0.045	≤0.03	10-14	16-18	2-3	≤0.1
430	≤0.12	≤1.00	≤1.00	≤0.040	≤0.03	≤0.75	16-18	-	-	-
JIS G4304	SUS304	≤0.08	≤1.00	≤2.00	≤0.045	≤0.03	8-10.5	18-20	-	-
JIS G4305	SUS304L	≤0.03	≤1.00	≤2.00	≤0.045	≤0.03	9-13	18-20	-	-
	SUS316	≤0.08	≤1.00	≤2.00	≤0.045	≤0.03	10-14	16-18	2-3	-
	SUS316L	≤0.03	≤1.00	≤2.00	≤0.045	≤0.03	12-15	16-18	2-3	-
	SUS430	≤0.12	≤0.75	≤1.00	≤0.040	≤0.03	-	16-18	-	-

Type	Basic Mass(kg/mm²)	Formula
304/304L	7.93	Sheet weight(kg) = 7.93 x thickness(mm) x width(m) x length(m)
316/316L	7.98	Sheet weight(kg) = 7.98 x thickness(mm) x width(m) x length(m)
430	7.70	Sheet weight(kg) = 7.7 x thickness(mm) x width(m) x length(m)

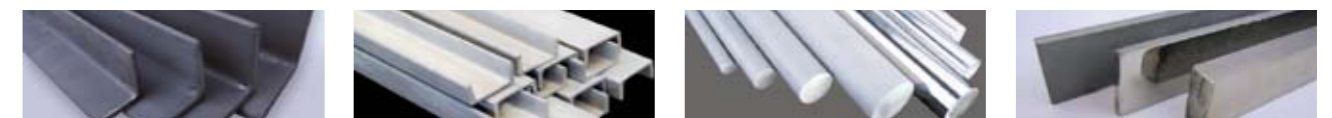
MANUFACTURING PROCESS

COIL/STRIP/SHEET/PLATE



STAINLESS STEEL FLAT/ANGLE/ROUND/HEX BAR

SS ROUND BAR	COLD DRAW	DIAMETER (MM)	
		1-50	
	HOT ROLLED ANNEALED&PICKLED	12-130	
	HOT FORGING ANNEALED	100-250	
SS ANGLE BAR	HOT ROLLED ANNEALED&PICKLED	THICKNESS(MM)	WIDTH (MM)
		3-5	25*25
		3-6	30*30
		3-6	40*40
		4-7	50*50
		4-8	60*60
		5-9	70*70
		6-10	75*75
		6-12	80*80
		7-12	100*100
SS FLAT BAR	COLD DRAW	THICKNESS(MM)	WIDTH (MM)
		3	25,30,35,40,45,50
		4	25,30,35,40,45,50,55,60,65
		5-16	25,30,35,40,45,50,55,60,65,70,75,80,85,90,95,100
		18-20	25,30,35,40,45,50,55,60,65,70,75,80,85,90,95,100,105,110,115,120,125,130
	HOT ROLLED ANNEALED&PICKLED	THICKNESS(MM)	WIDTH (MM)
		3	25,30,35,40,45,50
		4	25,30,35,40,45,50,55,60,65
		5-16	25,30,35,40,45,50,55,60,65,70,75,80,85,90,95,100
		18-20	25,30,35,40,45,50,55,60,65,70,75,80,85,90,95,100,105,110,115,120,125,130
SS SQUARE BAR	COLD DRAW	WIDTH (MM)	
		5x5,6x6,8x8,10x10,12x12,15x15,20x20,25x25,30x30,35x35,40x40,45x45,50x50	
	HOT ROLLED ANNEALED&PICKLED	10x10,12x12,14x14,15x15,16x16,18x18,20x20,22x22,25x25,30x30,35x35,40x40,45x45,50x50	
HEXAGONAL BAR	COLD DRAW	BETWEEN 5-41, EVERY SIZE	
WIRE ROD	HOT ROLLED ANNEALED&PICKLED	BETWEEN 5.5-14, EVERY SIZE	
THIN WIRE	COLD DRAW	BETWEEN 1-12, EVERY SIZE	



ALUMINIUM



ALUMINIUM AND ITS ALLOY STRIP IN COIL

Alloy: 1x, 3x, 5x, 8x series
 Temper: O, F, H12, H14, H16, H18, H22, H24, H26, H32, H34, H36, H38, H112
 Thickness: 0.2mm~7mm
 Width: 30mm~1500mm



Variety	Alloy	Temper	Size(mm)	
			Thickness	Width
Hot rolled coil	1x, 3x, 5x, 8x series	O, F, H112	2.5~7.0	900~1500
Stock for micron foil	1235	H14	0.25~0.50	900~1500
Coating sheet	1x, 3x, 5x series	H14, H16, H18, H22, H24, H26	0.18~0.75	1200~1500
Curtain coil	1100, 3003	H12, H22, H24, H26	1.5~3.0	1000~1500
	5005, 5052	H22, H24, H32, H34	1.5~3.0	1000~1500
Lithographic coil	1050	H18	0.23~0.28	650~1500
Can stock	3104	H19	0.28~0.31	1000~1550
Ceiling stock	1x, 3x series	H14, H24, H16, H26	0.4~1.0	200~1450
	5005, 5052	H24, H22	0.4~1.0	200~1450
Bottle lids stock	8011	H16, H18	0.20~0.30	500~1500
Coil for Al-composite pipe	1x, 3x, 8x series	O, H22	0.2~1.5	30~1500
Other coils	1x, 3x, 8x series and 5005, 5052	O, H1x, H2x	0.20~6.0	60~1500
	5x series	O, H1x, H2x, H3x	0.3~4.0	900~1500

ALUMINIUM AND ITS ALLOY PLATE AND SHEET

Alloy: 1x, 3x, 5x, 8x series
 Temper: O, F, H12, H14, H16, H18, H19, H32, H34, H36, H38, H111, H112, H321
 Thickness: 0.2~500 mm
 Width: 500~1500 mm
 Length: 2000~10000 mm



Variety	Alloy	Temper	Size(mm)		
			Thickness	Width	Length
Heat treatment non-reinforced plate & sheet	1x, 3x, 8x series	O, F, H12, H14, H16, H18, H19, H111, H112	0.2~1.0	500~1500	500~4000
			1.1~2.0	1000~1500	2000~10000
			2.1~7.0	1000~1500	2000~10000
	5x series	O, F, H12, H14, H16, H18, H19, H32, H34, H36, H38, H111, H112, H321	0.2~1.0	1000~1500	2000~10000
			1.1~2.0	1000~1500	2000~10000
			2.1~4.0	1000~1500	2000~10000
			4.0~150	1000~1500	2000~10000
Tread plate	1x, 3x, 5x series	O, F, H22, H24, H26	Bottom thickness 1.0~4.0	1000~1500	2000~10000
Stucco Embossed Coil	1x, 3x, 5x series	O, F, H12, H14, H16, H18, H22, H24, H26, H32	0.2~3.0	500~1500	Coil

ALUMINIUM FOIL

Alloy: 1050, 1100, 1235, 3001, 3003, 8011
 Thickness: 0.006-0.2 mm
 Width: 200~1800 mm



Variety	Alloy	Temper	Size(mm)			
			Thickness	Width	I.D	Max O.D
Appliance foil	8011	O	0.01~0.02	200~700	76.2, 152.4	450
Cable foil	1050	O	0.1~0.2	200~600	76.2	800
Pharmacy foil	1235, 8011	H18, H19	0.018~0.022	400~600	76.2	600
Air-conditioner foil	1100, 8011, 3102	H22, H24, H26, H19	0.07~0.20	400~1310	150, 200, 505	1450
Cigarette foil	1235	O	0.006~0.007	460~1320	76.2	400
Further fabricating foil	8011	O, H22, H24, H26, H18	0.012~0.06	300~1300	76.2	1300
Electronic foil	3001, 3003	H19	0.02~0.05	500~1000	76.2	1450
Lithographic sheet	1050	H18	0.14~0.15	600~1470	150, 200	1200
Decoration foil	1100, 3003	H18	0.026~0.15	1240~1400	150, 200	1200

GALVANIZED STEEL



Remarks:

1. Tolerance for thickness, width, flatness ect, can conform to the individual product specification.
2. Coil inside diameters can be either 508mm or 610mm,maximum coil outside diameter is 2000mm.
3. Weight of a single coil can be from 3 to 10 metric tons.
4. Please make enquires to our Sales& Marketing Division for products with special specifications.



HOT-DIP GALVANIZED STEEL SHEET COIL

Product Name	Hot-dip Galvanized Steel Sheet Coils	
Specifications	JIS G3302 1998	SGCC SGC340,SGC400,SGC490,SGC570,SGCH SGCD1,SGCD2,SGCD3
	ASTM A653M 2003	SGHC,SGH340,SGH400,SGH440,SGH490 CS Type A,CS Type B,CS Type C FS Type A, FS Type B SS GR230, SS GR255,SS GR275, SS GR340,SS GR550
	AS 1397 2001	DDS,EDDS G1,G2,G3 G250,G300,G350,G450,G550
	EN10327 2004	DX51D,DX52D,DX53D
	EN10326 2004	S220GD,S250GD,S280GD, S320GD,S350GD,S550GD
Steel Thickness (mm)	0.2-2.0	
Width (mm)	600-1500	
Coating Mass	JIS G3302 1998	Z08,Z12,Z18,Z20,Z22,Z25,Z27
	ASTM A653M	Z60,Z80,Z120,Z180,Z200,Z220,Z250,Z275
	AS 1397 2001	Z100,Z200,Z275
	EN10326/7	Z100,Z140,Z200,Z225,Z275
Spangle	Regular Spangle, Minimized Spangle, Extra-Smooth	
Chemical Surface Treatment	Chromating Treatment, Oiled or Anti-finger print	

GALVALUME (55% Al-Zn) COATED STEEL COIL

Product Name	GALVALUME(55% Al-Zn) coated steel coil	
Specifications	JIS G3321 1998	SGLCC,SGL400,SGL440,SGL570 SGLCD
	ASTM A792M 2003	CS Type A,B,C, FS DS SS Grade 230,255,275,340,550
	EN10327 2004	DX51D,DX52D,DX53D
	EN10326 2004	S220GD,S250GD,S280GD,S320GD, S350GD,S550GD
Steel Thickness (mm)	0.2-2.0	
Width (mm)	600-1500	
Coating Mass	JIS G3321 1998	AZ90,AZ120,AZ150
	ASTM A792M	AZM70,AZM90,AZM100,AZM150
	EN10326/7	AZ100,AZ150
Spangle	Regular Spangle	
Chemical Surface Treatment	Chromated Treatment, Oiled or Anti-finger print	

Remarks:

1. Tolerance for thickness, width, flatness ect, can conform to the individual product specification.
2. Coil inside diameters can be either 508mm or 610mm,maximum coil outside diameter is 2000mm.
3. Weight of a single coil can be from 3 to 10 metric tons.
4. Please make enquires to our Sales& Marketing Division for products with special specifications.



Specifications of Pre-painted Products			
Product Type	Product Spec.	Substrate Spec.	Coating Designation
Pre-painted	JIS G3312 1994	JIS G3302 1998	JIS G3302 1998
hot-dip galvanized steel coil	CGCC,CGCH ,CGCD1,CGC340, CGC400,CGC440,CGC550	SGCC,SGCH,SGCD1,SGC340, SGC400,SGC440,SGC550	Z10,Z12,Z18,Z20 Z22,Z25,Z27
	ASTM A755M 2001	ASTM A653M 2003	ASTM A653M 2003
		CS Type A,B,C FS Type A,B	Z100,Z120,Z180, Z275
		SS Grade 230,255,275,340,550	
	EN10169 1997	EN10327 2004	EN10326/7 2004
		DX51D,DX52D,DX53D	Z100,Z140,Z200, Z225,Z275
		EN10326 2004	
		S220GD,S250GD,S280GD	
		S320GD,S350GD,S550GD	
Pre-painted	JIS G3322 1998	JIS G3321 1998	JIS G3321 1998
55% Al-Zn coated steel coil	CGLCC,CGLCD,CGLC400, CGLC440,CGLC570	SGLCC,SGLCD,SGL400, SGL440,SGL570	AZ90,AZ120 AZ150
	ASTM A755M 2001	ASTM A792M 2003	ASTM A792M 2003
		CS Type A,B,C FS Type A,B	AZM70,AZM90,AZM100, AZM150
		SS Grade 230,255,275,340,550	
	EN10169 1997	EN10327 2004	EN10326/7 2004
		DX51D,DX52D,DX53D	AZ100,AZ150
		EN10326 2004	
		S220GD,S250GD,S280GD	
		S320GD,S350GD,S550GD	
Steel Thickness (mm)	0.2-2.0		
Width (mm)	600-1250		
Coating Thickness	Primer: PU or Epoxy 5~7um Top coat:20-25um		

1. Protective film can be applied.
2. Please provide sample panels for color requirement.

CHARACTERISTICS AND COMPARISON OF DIFFERENT SURFACE ASPECTS AND COATING TYPE



	Hot-dip Galvanized(Zinc Coated)	55% Al-Zn Coated
	Regular Spangle	Minimized(Zero) Spangle
Production Method	Spangle produced by crystallization solidification.	Blow zinc powder or atomized fog onto the molten zinc layer acts as nucleation sites or control the composition of pot for the minimized spangle.
Characteristics	Good adhesion and weathering resistance.	Uniform surface and attractive finish after painting.
Applications	Guardrails, gutters and down spouts, shutter door.	Pre-paint and post paint applications, gutters and down spouts, ceiling suspension bars, shutter door rails.



Stainless Steel Fittings



Hot Dipped Galvanized Steel Plate



Hot Dipped Galvalume(55% Al-Zn) Coated Steel Coil



Stainless Steel Coil



**Beijing Yajabey
International Co., Ltd.**

**Yajabey Corporation
Limited**



Add: Room 717, Guanghua Road Soho,
No.22, Guanghua Road,Chaoyang
District, Beijing. 100020
Web: www.yajabey.com

Tel: 0086-10-59006401 59006402
0086-10-59006403 59006404
Fax: 0086-10-59006400
Email: ec@yajabey.com