



CÔNG TY TNHH MTV CƠ KHÍ THÉP SMC



SMC STEEL MECHANICAL CATALOGUE 2020

SMC鋼鐵機械有限公司2020簡介



INTRODUCTION

SMC MECHANICAL ONE MEMBER CO., LTD

Founded on November, 26th 2008, SMC Mechanical is a member of **SMC Trading Investment Joint Stock Company.**

Address: Phu My 1 Industrial Zone, Phu My Ward, Phu My Town, Ba Ria Vung Tau Province, Vietnam.

Lines of Business: Manufacturing pickled and oiled steel, cold rolled steel, Coil Center – manufacturing, slitting, rolling, pickling, galvanizing, ...

Products: Cold Rolled Coils/ Strips, Pickled and Oiled Coils/ Strips, Galvanized Coils/ Strips,..
Coil Center - SMC Mechanical has lines of manufacturing cold rolled steel, galvanized steel with total capacity of **300.000 tonnes/ month**; lines of manufacturing pickled and oiled steel with total capacity of **300.000 tonnes/month** and all equipped with modern machinery.

We are major at manufacturing and providing cold rolled and galvanized coils/ strips with high accuracy and quality.

We are constantly improving and perfecting to bring customer the best products and services.

公司簡介

SMC 鋼鐵機械有限公司 (SMC STEEL MECHANICAL CO.,LTD) 成立於2008年11月26日, 是SMC 貿易投資股份公司(**SMC TRADING INVESTMENT JSC**) 之子公司.

地址: 越南巴地頭噸省, 富美鎮, 富美坊, 富美一工業區.

專營: 生產已經過酸洗的冷軋鋼、鍍鋅鋼、機械加工、分條等服務.

主力產品: 冷軋鋼、已經過酸洗的熱軋鋼、鍍鋅鋼等.

以最新的機器設備, 本公司的鍍鋅、冷軋生產線年產**300.000噸**, 已經過酸洗的熱軋生產線年產**300.000噸**.

本公司以精密加工及最好品質依照客戶的需求提供冷軋、鍍鋅等各類鋼捲.

不斷改進, 不斷完善, 追求完美, 為客戶提供最好產品和服務.

PICKLING LINE/ 连续酸洗线

No 序號	SPECIFICATIONS (材料參數)	INPUT(HRC) (入口)	OUTPUT(PO) (出口)
1	Thickness(mm)/ 板材厚度	1.8 ÷ 4.5	1.8 ÷ 4.5
2	Width(mm)/ 板材寬度	500 ÷ 750	500 ÷ 750
3	Weight(tonne)/ 鋼捲重量(噸)	8 ÷ 15	8 ÷ 15
4	Inside Diameter(mm)/ 鋼捲內徑	Ø 508, Ø 610 (± 10)	Ø508, Ø 610 (± 10)
5	Outside Diameter(mm)/ 鋼捲外徑	≤ 2,000	≤ 2,000

Production: 25.000 tonnes/month (1 line)/ 生產能力: 25.000 噸/月 (一條線)





▶▶ COLD ROLLING LINES/ 冷軋機

No 序號	SPECIFICATIONS (材料參數)	INPUT(HRC) (入口)	OUTPUT(PO) (出口)
1	Thickness(mm)/ 板材厚度	2.0 ÷ 4.5	0.5 ÷ 3.2
2	Width(mm)/ 板材寬度	500 ÷ 720	500 ÷ 720
3	Weight(tonne)/ 鋼捲重量(噸)	8 ÷ 15	8 ÷ 15
4	Inside Diameter(mm)/ 鋼捲內徑	Ø 508, Ø 610 (± 10)	Ø 610 (± 10)
5	Outside Diameter(mm)/ 鋼捲外徑	≤ 2000	≤ 2000
6	Hardness (HRB)/ 硬度	40 ÷ 65	79 ÷ 97
7	Tensile Strength/ 抗拉強度	270 ÷ 390	490 ÷ 740

Production: 27.000 tonnes/ month (2lines)/ 生產能力: 27.000 噸/ 月(兩條線)



▶▶ GALVANIZING LINES/ 鍍鋅線

No 序號	SPECIFICATIONS (材料參數)	INPUT(HRC) (入口)	OUTPUT(PO) (出口)
1	Thickness(mm)/ 板材厚度	0.65 ÷ 3.2	0.65-3.2
2	Width(mm)/ 板材寬度	500 ÷ 720	500 ÷ 720
3	Weight(tonne)/ 鋼捲重量(噸)	8 ÷ 15	8 ÷ 15
4	Inside Diameter(mm)/ 鋼捲內徑	Ø 610 (±10)	Ø 610 (±10)
5	Outside Diameter(mm)/ 鋼捲外徑	≤ 2000	≤ 2000
6	Galvanized layer thickness/ 鍍鋅層厚度		Min.Z60, max.Z275

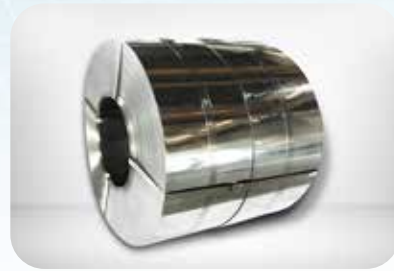
Production: 25.000 tonnes/ month (2lines)/ 生產能力: 25.000 噸/ 月(兩條線)



▶▶ SLITTING LINE/ 分條機

No 序號	SPECIFICATIONS (材料參數)	INPUT(HRC) (入口)	OUTPUT(PO) (出口)
1	Thickness(mm)/ 板材厚度	0.5 ÷ 10.0	0.5 ÷ 10.0
2	Width(mm)/ 板材寬度	300 ÷ 1780	≥ 40
3	Weight(tonne)/ 鋼捲重量(噸)	8 ÷ 27	8 ÷ 27
4	Width tolerance(mm)/ 寬度公差		± 0.5
5	Inside Diameter(mm)/ 鋼捲內徑	Ø 508 (±10); Ø 610 (±10)	Ø 508 (±10); Ø 610 (±10)
6	Outside Diameter(mm)/ 鋼捲外徑	≤ 2000	≤ 2000

Production: 52.000 tonnes/month (6 lines)/ 52.000 噸 / 月 6 台機)



▶▶ STANDARDS/ 標準

▶▶ GALVANIZED/ 鍍鋅鋼

JIS G3302 Standard/ JIS G 3302 標準

Symbol of Grade	Yield point or proof stress (N/mm ²)	Tensile strength (N/mm ²)	Elongation (%)			
			Normal thickness (t) mm			
			0.60 ≤ t < 1.0	1.0 ≤ t < 1.6	1.6 ≤ t < 2.5	2.5 ≤ t < 3.2
SGCC	(205 min.) ^b	(270 min.) ^b	-	-	-	-
SGC340	245 min.	340 min.	20 min.	20 min.	20 min.	20 min.
SGC440	335 min.	440 min.	18 min.	18 min.	18 min.	18 min.
SGC490	365 min.	490 min.	16 min.	16 min.	16 min.	16 min.



AS 1397 Standard/ AS 1397 標準

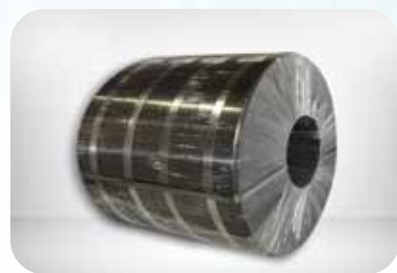
Steel grade designation	Longitudinal tensile test			
	Min yield strength(Note 1) (MPa)	Min tensile strength (MPa)	Min. elongation, % (Note 2)	
			Lo=50mm	Lo=80mm
G350	350	420	15	14
G450	450	480	10	9
G550	550	550	2	2



▶▶ COLD ROLLED STEEL/ 冷軋鋼

▶▶ Based on JIS G 3141 Standard/ JIS G 3141 標準

No 序號	SMC CLASSIFICATIONS (按照SMC的型號)	TENSION (N/mm ²)
1	CR-8B	330 ÷ 430
2	CR-4B	480 ÷ 530
3	CR-2B	530 ÷ 630
4	CR-1B	> 630
5	CR-AN8	350 ÷ 410
6	CR-AN6	410 ÷ 480
7	CR-ANS	310 ÷ 360
8	CR-ANS2	280 ÷ 310



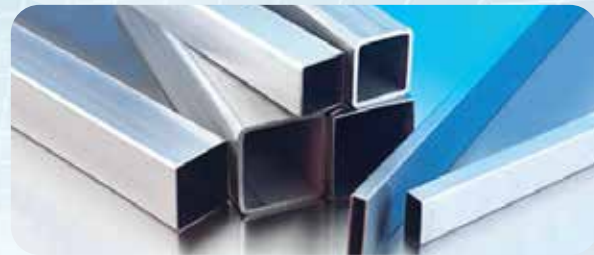
▶▶ MANUFACTURING CAPABILITY/ 生產能力

No 序號	TYPE (鋼類)	CLASSIFICATION (鋼種)	THICKNESS (mm) (厚度)	WIDTH (mm) (寬度)
1	GI	SGCC	0.65 - 1.95	600 - 720
2	GI	SGC340	0.65 - 1.95	600 - 720
3	GI	SGC440	1.50 - 1.95	600 - 720
4	GI	SGC490	1.50 - 1.95	600 - 720
5	GI	G350	1.50 - 3.20	600 - 720
6	GI	G450	1.50 - 3.20	600 - 720
7	GI	G550	1.50 - 3.20	600 - 720
8	CR	CR - 8B	0.5 - 1.95	600 - 700
9	CR	CR - 4B	0.5 - 1.95	600 - 700
10	CR	CR - 2B	0.5 - 1.95	600 - 700
11	CR	CR - 1B	0.5 - 1.95	600 - 700
12	CR	CR - AN8	0.5 - 1.95	600 - 700
13	CR	CR - AN6	0.5 - 1.95	600 - 700
14	CR	CR - ANS	0.5 - 1.95	600 - 700
15	CR	CR - ANS2	0.5 - 1.95	600 - 700

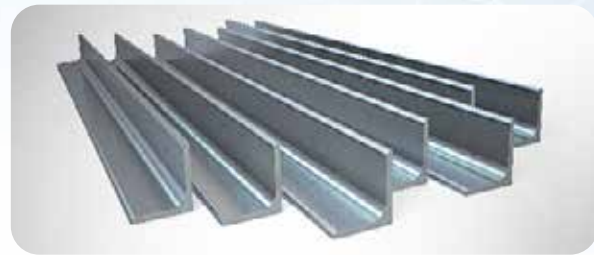
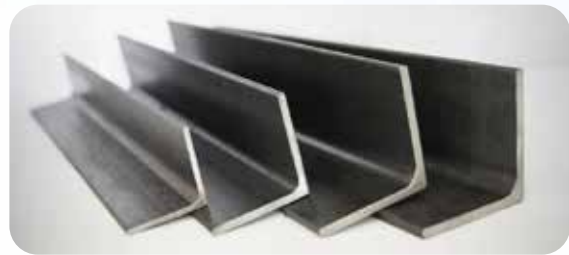


▶▶ APPLICATIONS/ 應用

PIPES AND TUBES/ 鋼管



V-SHAPE STEEL/ V型鋼



PURLINS/ 標條



RACKS/ 貨架



SLIDES/ 軌道





SMC STEEL MECHANICAL ONE MEMBER CO., LTD

 Phu My IIZ, Phu My Ward, Phu My Town, BRVT Province, Vietnam
 (84-254) 3922 933 - 955 -966  (84-254) 3922 969  www.smc.vn