



High Quality Straps and Strapping Machines



REGULAR DUTY

BEKAP ARES (STEEL STRAPS ACC TO EN13246; TYPE 2.1)

Width		Thickness		Tensile Strength N/mm ² (Average)	Elongation (L=5D) (min.)
mm	Inches	mm	Inches		
12,70	1/2	0,50	.020	850	6,0
12,70	1/2	0,60	.023	850	6,0
16,00	5/8	0,50	.020	850	6,0
16,00	5/8	0,60	.023	850	6,0
19,00	3/4	0,50	.020	850	6,0
19,00	3/4	0,60	.023	850	6,0
19,00	3/4	0,63	.025	850	6,0
19,00	3/4	0,70	.0275	800	6,0
19,00	3/4	0,80	.031	800	6,0
19,00	3/4	0,90	.035	800	6,0
19,00	3/4	1,00	.040	800	6,0
25,40	1	0,63	.025	800	6,0
25,40	1	0,70	.0275	800	6,0
25,40	1	0,80	.031	800	6,0
25,40	1	0,90	.035	800	6,0
25,40	1	1,00	.040	800	6,0
31,75	1 1/4	0,63	.025	800	6,0
31,75	1 1/4	0,70	.0275	800	6,0
31,75	1 1/4	0,80	.031	800	6,0
31,75	1 1/4	0,90	.035	800	6,0
31,75	1 1/4	1,00	.040	800	6,0

HIGH TENSILE

BEKAP ARES PLUS (STEEL STRAPS ACC TO EN13246; TYPE 3.2)

Width		Thickness		Tensile Strength N/mm ² (Average)	Elongation (L=5D) (Average)
mm	Inches	mm	Inches		
16,00	5/8	0,50	.020	1.000	16,0
16,00	5/8	0,60	.023	1.000	16,0
19,00	3/4	0,50	.020	1.000	16,0
19,00	3/4	0,60	.023	1.000	16,0
19,00	3/4	0,63	.025	1.000	16,0
19,00	3/4	0,70	.0275	1.000	16,0
19,00	3/4	0,74	.029	1.000	16,0
19,00	3/4	0,80	.031	1.000	16,0
19,00	3/4	0,90	.035	1.000	16,0
19,00	3/4	1,00	.040	1.000	16,0
25,40	1	0,63	.025	1.000	16,0
25,40	1	0,70	.0275	1.000	16,0
25,40	1	0,74	.029	1.000	16,0
25,40	1	0,80	.031	1.000	16,0
25,40	1	0,90	.035	1.000	16,0
25,40	1	1,00	.040	1.000	16,0
31,75	1 1/4	0,63	.025	1.000	16,0
31,75	1 1/4	0,70	.0275	1.000	16,0
31,75	1 1/4	0,74	.029	1.000	16,0
31,75	1 1/4	0,80	.031	1.000	16,0
31,75	1 1/4	0,90	.035	1.000	16,0
31,75	1 1/4	1,00	.040	1.000	16,0

HIGH ELONGATION

BEKAP ARES FLEX (STEEL STRAPS ACC TO EN13246; TYPE 3.1)

Width		Thickness		Tensile Strength N/mm ² (min.)	Elongation (L=5D) (min.)
mm	Inches	mm	Inches		
16,00	5/8	0,50	.020	750	18,0
16,00	5/8	0,60	.023	750	18,0
19,00	3/4	0,50	.020	750	18,0
19,00	3/4	0,60	.023	750	18,0
19,00	3/4	0,63	.025	750	18,0
19,00	3/4	0,70	.0275	750	18,0
19,00	3/4	0,74	.029	750	18,0
19,00	3/4	0,80	.031	750	18,0
19,00	3/4	0,90	.035	750	18,0
19,00	3/4	1,00	.040	750	18,0
25,40	1	0,63	.025	750	18,0
25,40	1	0,70	.0275	750	18,0
25,40	1	0,74	.029	750	18,0
25,40	1	0,80	.031	750	18,0
25,40	1	0,90	.035	750	18,0
25,40	1	1,00	.040	750	18,0
31,75	1 1/4	0,63	.025	750	18,0
31,75	1 1/4	0,70	.0275	750	18,0
31,75	1 1/4	0,74	.029	750	18,0
31,75	1 1/4	0,80	.031	750	18,0
31,75	1 1/4	0,90	.035	750	18,0
31,75	1 1/4	1,00	.040	750	18,0

SPECIAL PRODUCTION

BEKAP ARES ULTRA FLEX (SPECIAL TYPE)

Width		Thickness		Tensile Strength N/mm ² (Average)	Elongation (L=5D) (Average)
mm	Inches	mm	Inches		
16,00	5/8	0,50	.020	900	22,0
16,00	5/8	0,60	.023	900	22,0
19,00	3/4	0,50	.020	900	22,0
19,00	3/4	0,60	.023	900	22,0
19,00	3/4	0,63	.025	900	22,0
19,00	3/4	0,70	.0275	900	22,0
19,00	3/4	0,74	.029	900	22,0
19,00	3/4	0,80	.031	900	22,0
19,00	3/4	0,90	.035	900	22,0
19,00	3/4	1,00	.040	900	22,0
25,40	1	0,63	.025	900	22,0
25,40	1	0,70	.0275	900	22,0
25,40	1	0,74	.029	900	22,0
25,40	1	0,80	.031	900	22,0
25,40	1	0,90	.035	900	22,0
25,40	1	1,00	.040	900	22,0
31,75	1 1/4	0,63	.025	900	22,0
31,75	1 1/4	0,70	.0275	900	22,0
31,75	1 1/4	0,74	.029	900	22,0
31,75	1 1/4	0,80	.031	900	22,0
31,75	1 1/4	0,90	.035	900	22,0
31,75	1 1/4	1,00	.040	900	22,0

HEAVY DUTY

BEKAP ARES MAX (STEEL STRAPS ACC TO EN13246; TYPE 2.2)

Width		Thickness		Tensile Strength N/mm ² (Average)	Elongation (L=5D) (min.)
mm	Inches	mm	Inches		
19,00	3/4	0,63	.025	950	6,0
19,00	3/4	0,80	.031	950	6,0
19,00	3/4	0,90	.035	950	6,0
19,00	3/4	1,00	.040	950	6,0
25,40	1	0,63	.025	950	6,0
25,40	1	0,80	.031	950	6,0
25,40	1	0,90	.035	950	6,0
25,40	1	1,00	.040	950	6,0
31,75	1 1/4	0,63	.025	950	6,0
31,75	1 1/4	0,80	.031	950	6,0
31,75	1 1/4	0,90	.035	950	6,0
31,75	1 1/4	1,00	.040	950	6,0

LASHING/USLM

BEKAP ARES PLUS USLM (STEEL STRAPS ACC TO EN13247)

Width		Thickness		(m/KG)	Markings	Min. Strap Strength (N)
mm	Inches	mm	Inches			
31,75	1 1/4	0,80	.031	5.02	Ⓢ	28.000
31,75	1 1/4	1,12	.044	3.56	ⓈⓈ	38.000
31,75	1 1/4	1,27	.050	3.16	ⓈⓈⓈ	43.000
31,75	1 1/4	1,45	.057	2.76	ⓈⓈⓈⓈ	49.000

BEKAP ARES STEEL STRAP COIL WINDINGS

	12.7-19.0 mm Oscillated Wound	31.75-25.4 mm Ribbon Wound	12.7-19.0 mm Ribbon Wound	Jumbo	Super Jumbo
INNER DIAMETER	406 mm	406 mm	305 mm	406 mm	406 mm
OUTSIDE DIAMETER	Max. 590 mm	Max. 600 mm	Max. 600 mm	Max. 900 mm	Max. 900 mm
COILING WIDTH	63 mm	31.75-25.4 mm	12.7-19 mm	190-400 mm	290-400 mm
COILS PER PALLET	12-15	22	24-30	4	1
WEIGHT PER COIL	Max. 53 kg	Max. 50 kg	Max. 24 kg	Max. 500 kg	Max. 1000 kg

POLYESTER STRAPS



TECHNICAL SPECIFICATIONS OF POLYESTER STRAPS - SMOOTH

Width (mm)	Gauge (mm)	Length (m)	Breaking Load (kg)		Elongation (%)
			Min.	Max.	
12	0.70	2.000	336	378	8 – 15
15.5	0.80	1.300	496	558	8 – 15
15.5	0.90	1.500	558	628	8 – 15
16	1.00	1.000	760	855	8 – 15
19	1.00	1.000	760	855	8 – 15
19	1.27	800	965	1086	8 – 15

TECHNICAL SPECIFICATIONS OF POLYESTER STRAPS - EMBOSSED



Width (mm)	Gauge (mm)	Length (m)	Breaking Load (kg)		Elongation (%)
			Min.	Max.	
12	0.60	2.500	245	275	8 – 15
12	0.70	2.000	286	321	8 – 15
15.5	0.90	1.500	474	534	8 – 15
16	0.60	1.800	326	367	8 – 15
16	0.70	1.400	381	428	8 – 15
16	1.00	1.000	517	581	8 – 15
19	1.00	1.000	646	727	8 – 15

COMPOSITE STRAPS



TECHNICAL SPECIFICATIONS OF COMPOSITE STRAPS

Width (mm)	Length (m)	Breaking Load (kg)	Coil Per Box
13	1.100	340	2
16	850	450	2
19	600	650	2
25	500	830	2
32	300	1.250	2

BEKAP ARES STEEL STRAPS

- Are produced of high quality steel with narrow tolerance metallurgical properties
- Have maximum performance and resistance under high tension and harsh conditions
- Enable safe transportation of your products
- Edges are rounded and waxed using a special method in order to secure work safety as well as the ease of handling and compatibility of any automatic strapping machines



BEKAP ARES STEEL STRAP WINDINGS

Three basic windings offered are as follows:

Oscillated: Coils are wound on flange width of 63 mm.

Ribbon: Each strap is wound on the top of its own width.

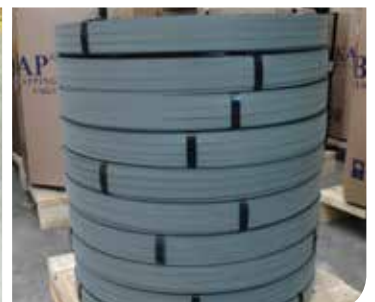
Jumbo: Coils are wound on flange width of gauge 190 to 400 mm as per request.

BEKAP ARES STEEL STRAPS SURFACE FINISH

Blued: No coating; the surface of the steel straps are waxed.

Black: The surface is coated with black paint and waxed in order to avoid corrosion.

Zinc: The surface is coated with zinc paint and waxed in order to have the highest corrosion resistance.



Please contact our sales offices for more information about our other products

STEEL AND PET STRAPPING TOOLS



BKP-PC24
32 mm Pneumatic Steel
Strapping Tool



BKP-PC25
19 mm Pneumatic Steel
Strapping Tool



BKP-PCMK
Pneumatic Steel
Strap Cutter



BKP-PLSG
Tensioner for Lashing
(USLM) Straps



BKP-PLST
Sealer for Lashing (USLM) Straps

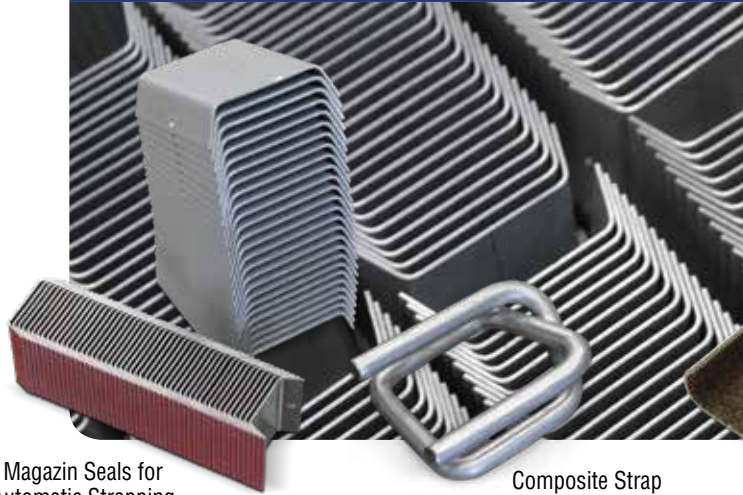


Please contact our Sales Office for more information about our tools and automatic machines



BKP-PP14
Pneumatic Polyester Strapping Tool

SEALS FOR COMPOSITE, PET AND STEEL STRAPS



Magazin Seals for Automatic Strapping Machines

Composite Strap Seals



Sanded Seals for Lashing Straps

Steel Strap Seals

MANUAL STRAPPING TOOLS & ACCESSORIES



BKP-MP10
13-16-19 mm Composite Strap Tensioner



BKP-MC20
13-16-19 mm Sealless Steel Strapping Combination Tool



BKP-MP11
25-32 mm Composite Strap Tensioner



BKP-MC21
32 mm Heavy Duty Steel Strap Tensioner



BKP-MP12
13-16-19 mm Polyester Strap Tensioner



BKP-MC22
32 mm Double Notch Sealer



BKP-MP13
Composite Strap Tensioner



BKP-MC23
13-16-19 mm Steel Strap Tensioner



BKP-MK32
Heavy Duty Cutter



BKP-MK19
Strapping Cutter



BKP-B115
Balancer (7.5-11.5 kg)



BKP-B220
Balancer (15-22 kg)

Strap Size (mm)	Type Of Seal	Connection Type	Size Of Seal (mm)		Quantity Per Box
			Gauge	Length	
12.7	Push type	Single Notch	0.60	22	8.000
16	Push type	Single Notch	0.60	22	6.000
19	Push type Magazine seal	Double Notch	0.60	32	3.000
		Single Notch	0.60	22	4.000
		Double Notch	0.80/0.90	57	1.250
25	Push type Magazine seal	Double Notch	0.80/0.90	45	1.250
		Double Notch	0.80/0.90	57	1.250
31,75	Push type Magazine seal	Double Notch	0.80/0.90	45	1.000
		Double Notch	0.80/0.90	57	1.000
	USLM seal	Double Notch	1.10	51	750
		Double Notch	1.32	75	500



Strap Dispensers

THE WORLD HAS MADE THE CHOICE ON HIGH QUALITY STEEL STRAPS

- Export to 70 countries
- European most modern producer of steel straps with high tensile strength and high elongation
- One of the world's few producers of Lashing straps (USLM) which is used for the loading of vessels at ports
 - The producer of time saving and production efficient super jumbos



BEKAP Metal İnş. San. ve Tic. A.Ş.

Head Office:

Orta Mahalle Kaptanı Derya Cd. No: 35/2

Soğanlık – Kartal – İstanbul / TURKEY

Tel : +90 (262) 452 35 82 (pbx)

Fax: +90 (262) 377 48 04

www.bekap.com muhasebe@bekap.com

Sales Office:

Yeni Mahalle Aheste Sk. No: 17

Kartal Kent Plus C Blok K:1 D:10

Soğanlık – Kartal – İstanbul / TURKEY

Tel : +90 (216) 623 10 20

Fax: +90 (216) 623 10 78

www.bekap.com sales@bekap.com

Factory:

Dilovası O.S.B.

4. Kısım Ceyhan Cd. No:27

Gebze – Kocaeli / TURKEY

Tel : +90 (262) 724 92 45 (pbx)

Fax: +90 (262) 724 92 48

www.bekap.com uretim@bekap.com

Bekap Germany:

BEKAP Verpackungssysteme GmbH

Dr. Berns Str. 37

47441 Moers

Tel : +49 (0) 2841 88 60 977-9

Fax: +49 (0) 2841 88 99 971

www.bekap.de info@bekap.de

