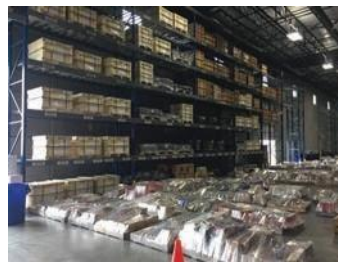


## PIPE AND TUBULAR PRODUCTS

A.I.D. IS COMMITTED TO PROVIDING THE HIGHEST QUALITY MATERIALS AT A COMPETITIVE PRICE, ALONG WITH RESPONSIVE SERVICE FROM EXPERIENCED PROFESSIONALS. OUR GOAL IS TO BUILD OUR STOCK AROUND CUSTOMER NEEDS AND FORGE RELATIONSHIPS THEY CAN RELY ON.



### PIPE, FITTINGS, AND FLANGES

Supplying industry across the country with everything they need in pipe, fittings, and flanges. Southwest Stainless & Alloy will meet your needs.

#### PRODUCTS

More than 20 grades of stainless steel and specialty alloys are in inventory. Chrome and carbon pipes, fittings, and flanges are also stocked.

#### PIPE

Welded: 1/8" - 42" Seamless: 1/8" - 24"

#### FLANGES

Weld-neck, slip-on, blind, threaded, socket weld, long weld neck, and lap joint with facings to your specifications.

#### FITTINGS

Butt-weld: seamless and welded from 1/2"  
Screwed and socket weld: forged, bar stock, castings from 1/8"-4"

#### NIPPLES

Standard and special lengths with end configurations to fit your needs.

#### TUBING

Instrumentation, structural, and pressure in seamless and welded from 1/8".  
Heavy walls and hard-to-find items.  
Tube fittings are also available in stock.

### STEAM PRODUCTS

#### STEAM TRAPS

- Clean Steam

#### PRODUCTS

- Liquid Drainers
- Mechanical
- Thermodynamic
- Thermostatic

#### STRAINERS

- Brass
- Carbon Steel
- Cast Iron
- Stainless Steel

#### ENGINEERED PRODUCTS

- Desuperheaters
- Filters
- Flash Vessels
- Hot Water Systems
- Humidification
- Pump Protection/
- Recirculation
- Unit Heaters

#### CONDENSATE PUMPS

- Boiler-Fed
- Electric
- Pressure-Powered

#### CONTROLS & REGULATORS

- Direct Acting
- Pilot Operated

#### VALVES

- Boiler Blowdown
- Check Valves
- Isolation & Control
- Safety Valves
- "Y" Pattern Globe

#### ACCESSORIES

- Air Vents
- Manifolds
- Meters
- Orifice Plates
- Separators
- Sight Glasses
- Vacuum Breakers

# ENERGY, OIL & GAS, REFINING, PETROCHEMICAL, MINING, & LNG

## STAINLESS

304/304L  
316/316L  
304/316-A270 Sanitary  
304H  
316H  
310S/310H  
321H  
347H  
410S  
904L  
Duplex 2205  
254 SMO

## CHROME

P11/F11/WP11  
P22/F22/WP22  
P5/F5/WP5  
P9/F9/WP9  
P91/F91/WP91

## NICKEL

Alloy 20  
Alloy 200  
Alloy 400  
Alloy 600, 625  
Alloy 800H, 825  
Alloy C276

## ALUMINUM

6061-T6

## CARBON

A106/A234/A105/  
A53

## IRON

Cast  
Malleable

## PIPING COMPONENTS AND ACCESSORIES

### CLAMPS

- Hose Clamps
- Pipe Clamps
- Repair Clamps

### COUPLINGS

- Bolted Couplings
- Compression Couplings
- Reducing Couplings
- Sleeve Couplings

### NIPPLES

- Pipe & Swage
- Tubing
- Case

### GROOVED PIPING SYSTEMS

- Press fit Systems

### FASTENERS

- Coated Fasteners
- Machine Bolts & Nuts
- Specialty Fasteners

### GASKETS

- API Ring Gaskets
- Cut Gaskets
- Non-asbestos Gaskets
- Spiral Wound Gaskets
- Sheet Packing

### PIPE ACCESSORIES

- Pipe Hangers
- Pipe Caps
- Pipe Wraps & Primer

## PLATE, SOLID BAR, TUBING, AND EXPANDED METAL

### PLATE

304L AND 316L  
10GA - 14GA, 48" x 96"  
10GA - 26GA, 48" x 120"  
10GA - 16GA, 60" X 120"  
3/16" -1/2" THICKNESS, 48" X 96", 48" X 120", AND 60" X 120",

### SOLID BAR / TUBING / EXPANDED METAL

- Flatbar  
304L AND 316L, 1/8" - 1/2"
- Round Bar  
304L AND 316L, 1/8" - 3"
- Square Bar  
304L ONLY, 1/8" - 1.5" THICK
- Square Tubing 304L ONLY, 1" - 4"
- Flattened Expanded Metal 304L ONLY - 1/2" AND 3/4"
- Angle  
304L AND 316L,

## PIPE MANUFACTURERS

### WELD PIPE

Bristol  
Douglas Barwick  
Marcegaglia  
Outokumpu  
Outokumpu Import Eq  
Pantech  
SeAH  
Sonha  
Ta Chen  
TG Pro  
Thareus  
Webco

### SMLS PIPE

Baofeng  
Centravis  
CPI  
Jiuli  
KE&P  
Kobe  
Kuze  
Lixue  
Nantong  
Nippon Sumitomo  
PCC Rollmet Pexco  
Posco/SeAHCSS  
Productos  
Salzitter DMV  
Sandvik  
Sandvik- Sweden  
Sanyo  
Schoeller Bleckman  
Stellar  
Tubacex  
Walsin  
Wujin

### WELDTUBING

Rath Gibson  
Webco Industries

### SMLS TUBING

Centravis  
Greenville Tube Company  
Salem Tube  
Salzitter Mannesmann Stainless Tubes  
Sandvik Materials Technology

### 150#

Alloy Stainless Products  
Capitol Camco  
Dason Stainless  
Haitima Corporation  
Ta Chen International

### 3M#

Alloy Stainless Products  
Both-Well  
Capitol Camco  
Chero Piping  
Dason Stainless  
I.M.L. - Industria Meccanica Ligure  
M.E.G.A.  
OMC Raccordi  
Penn Machine

### STUB ENDS

Stainless Fittings Group  
Techtube  
Jero Inc  
Viraj

### BW

Core Pipe  
Enlin – Philippines  
Erne Fittings  
EZE Flow  
Flowline  
Sung Kwang Bend Taylor  
Forge Stainless Tung  
Fong Industrial Co  
Wilhelm Schulz

### FLANGES

Ameri-Forge  
Bebitz  
Core Pipe  
Enlin  
Kerkau Manufacturing  
Maass Flange  
Metalfar  
Maass Flange  
Ulma  
Viraj

### OLETS

Penn Machine  
Precision Components

### NIPPLES/SWAGES

Capitol Camco  
Westbrook Mfg